

# HUTCHINSON TOWNSHIP

Each township has six files containing six sections in each, and one file containing all 36 sections.

Hutchinson01to06.pdf  
Hutchinson07to12.pdf  
Hutchinson13to18.pdf  
Hutchinson19to24.pdf  
Hutchinson25to30.pdf  
Hutchinson31to36.pdf  
HutchinsonAll36.pdf

The points are listed starting with the point above the SE corner and continuing in a counter-clockwise rotation around the section. This normally begins with the East point, Northeast, then North, but may also include Witness Corners, and/or Meander Corners.

## **Definitions**

**Witness Corner:** A witness corner “stands in” when the true corner cannot be monumented or occupied because of difficult terrain or obstruction of the corner sight. The witness corner must be on the section line and is usually 5 or 10 chains away from the true corner.

**Meander Corner:** The intersection of a township, range, or section line and the banks of a navigable stream or meandering body of water.



OFFICE OF COUNTY RECORDER  
MCLEOD COUNTY MINNESOTA

DOCUMENT NUMBER A-342597

CERTIFIED FILED AND/OR RECORDED ON  
May 10, 2004, AT 12:00:00 PM

LYNN ETTE SCHRUPP, COUNTY RECORDER  
Fees:

DUPLICATE INFORMATION	\$5.00
EQUIPMENT FUND	3.00
SURCHARGE	4.50
SURCHARGE ERER	.50
GENERAL ABSTRACT	12.00
Total	\$20.50

Received from/return to:

MN DEPT OF TRANSPORTATION  
2505 TRANSPORTATION ROAD  
P O BOX 768  
WILLMAR, MN 56201- 0768

A-342597

## CERTIFICATE OF LOCATION OF GOVERNMENT CORNER

EAST QUARTER Corner of Section 31, Township 117 N., Range 29 W.

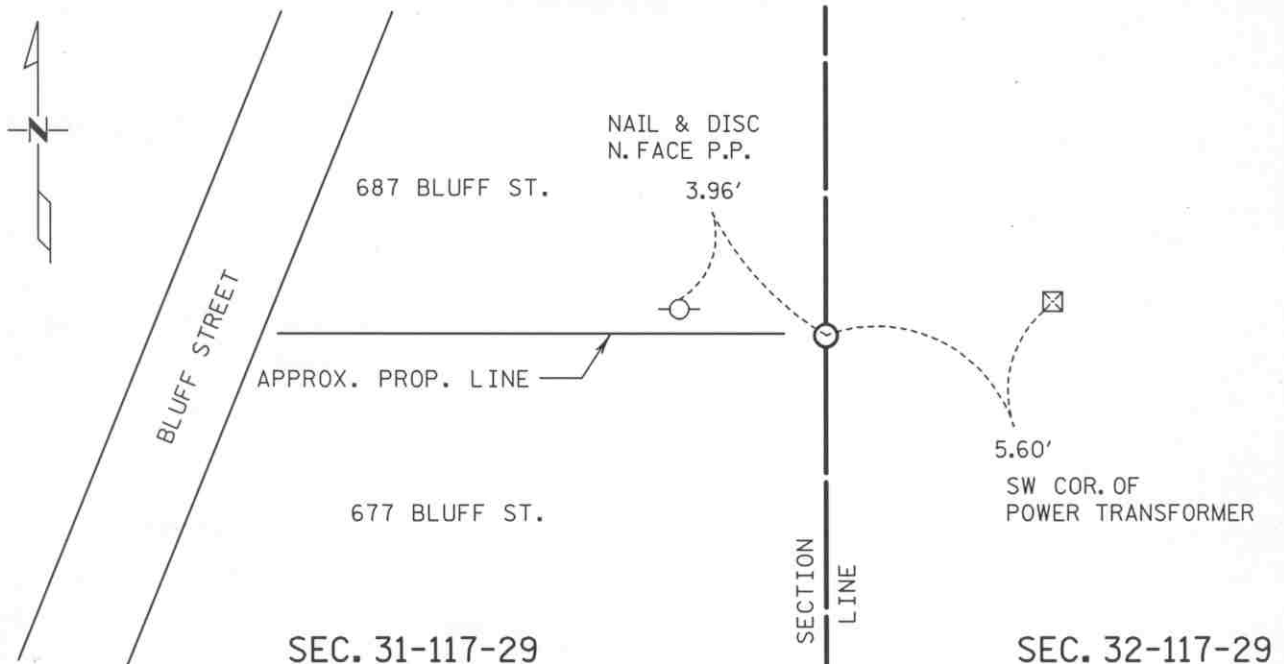
5th Principal Meridian, State of Minnesota, County of McLEOD

At the corner location shown on the sketch:

☒ On JUNE, 2003 found an Iron pipe with a 4 inch diameter brass cap on top  
DATE about 0.3 feet below the ground surface.

☒ left monument as found ☐ lowered monument ☐ removed monument (explain)

☐ On \_\_\_\_\_ placed a \_\_\_\_\_  
DATE



Statement of evidence for this corner location is on back of this page.

I hereby certify that this document was researched and prepared by me or under my direct supervision.

Signature Matthew J. Schlegel

Date 5-07-04

License No. 24640

Title: ☒ Land Surveyor ☐ Professional Engineer ☐ County Surveyor ☐ County Engineer

Statement of Evidence:

East Quarter Corner Section 31, T 117 N, R 29 W

- 1856 - The original Public Land Survey was completed by A. H. Runyon. A charred stake was set in a mound of dirt to mark the corner. The mound was raised with a trench as per instructions and apple seeds were planted on the southeast corner of the mound.
- 1919 - E. L. Higgins, McLeod County Surveyor, found a stone at the corner and measured the distance to the northeast corner of the section at 2652.6 feet.
- 1930 - E. L. Higgins' measurement to the center of the Section 32 was 2623 feet.
- 1967 - Dickman Knutson, McLeod County Surveyor, found an iron pipe with a McLeod County brass cap on top.
- 1968 - Dickman Knutson measured the distance to a wood fence post at/near the center of Section 32 to be 2623 feet.
- 1984 - Willard Pellinen, McLeod County Surveyor, measured 2651.85 ft. to the northeast corner of the section and 2623.04 ft. to the center of Section 32 from the iron pipe with a brass cap on top.
- 1989 - Willard Pellinen recovered the iron pipe with a brass cap on top and set new reference ties. The monument was probably set by Carlisle Madsen, Sr., McLeod County Surveyor, in the 1920s to replace the stone. It is typical of the monuments set during his tenure.
- 1991 - A Mn/DOT survey crew (Gene East, crew chief) found the iron pipe with a 2" diameter brass cap on top about 4" below the surface.

The iron pipe is accepted as the corner location because it fits old surveys and it apparently is the perpetuation of a position that has been considered to be the corner for at least 72 years. It is located 30.79 ft. east and 7.64 ft. south of the lost location.

Statement of Evidence:

**Certificate of Location of Government Corner**

East Quarter Corner, Section 31, Township 117 North, Range 29 West

- 2003 Matthew Schlagel, Mn/DOT Land Surveyor, found the iron pipe with a 4 inch diameter brass cap on top about 0.3 feet below the surface. Chain ties were updated.

# CERTIFICATE OF LOCATION OF GOVERNMENT CORNER

NORTHEAST Corner of Section 31, Township 117 N, Range 29 W, 5<sup>th</sup> P.M.

STATE OF MINNESOTA, County of MCLEOD

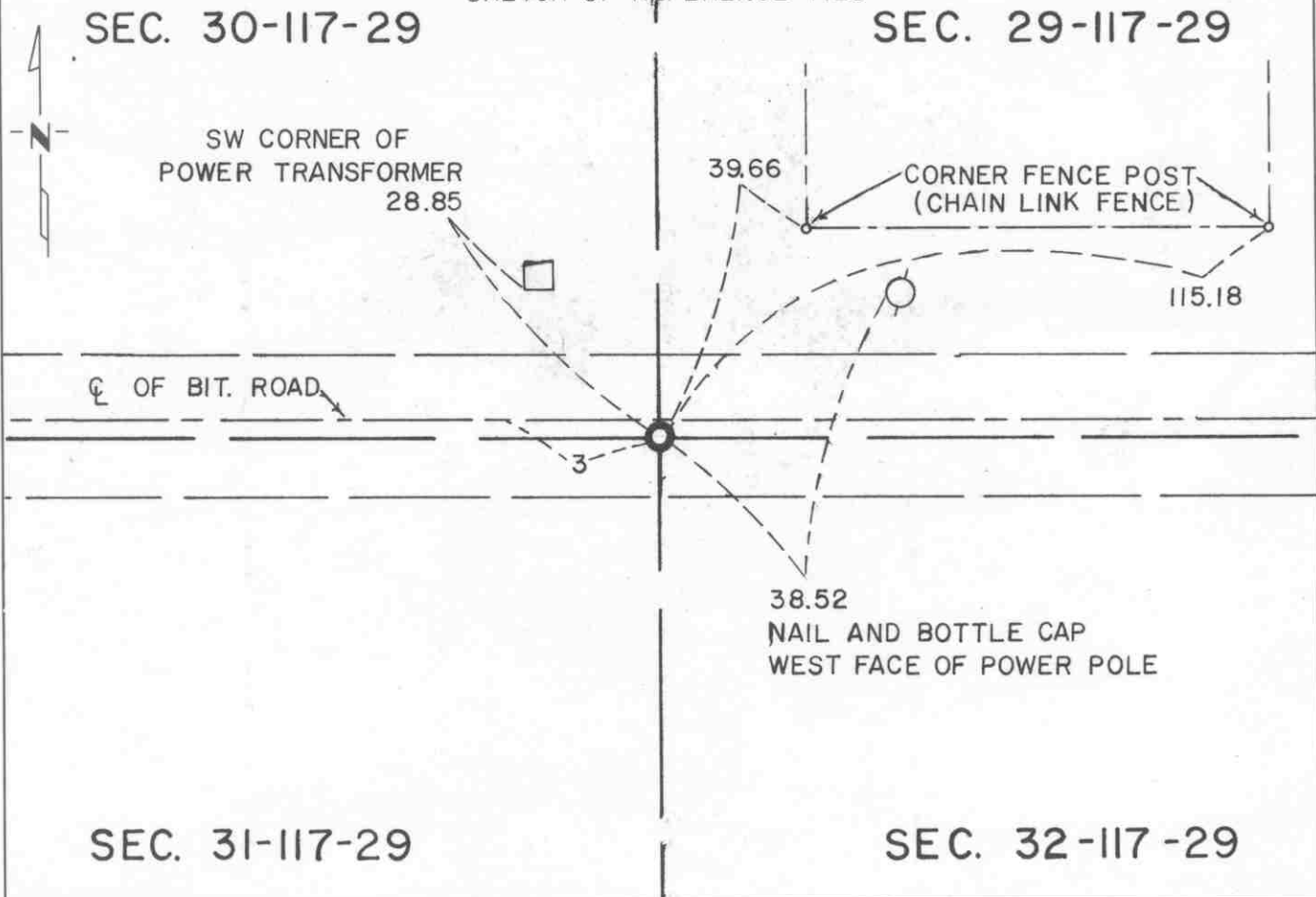
At the corner location shown on the sketch:

☒ On FEB. 1991 found a CAST IRON MONUMENT ABOUT 3" BELOW  
DATE THE ROAD SURFACE

☒ left monument as found, ☐ lowered monument, ☐ removed monument (explain)

☐ On \_\_\_\_\_ placed a \_\_\_\_\_  
DATE

## SKETCH OF REFERENCE TIES



Statement of evidence relative to this corner location is on back of page.

I hereby certify that this document and the data contained herein was prepared by me or under my direct supervision.

Robert C. Jones 7-22-92  
SIGNATURE DATE

Registration No. 11864

☒ Land Surveyor, ☐ Professional Engineer

☐ County Surveyor, ☐ County Engineer

OFFICE OF THE COUNTY RECORDER

County of McLeod

I hereby certify that this document was filed in the Co. Recorders office at 9 A. .M. on the 29th day of July A.D., 1992

County Recorder Armen Ostlie

By \_\_\_\_\_, Deputy

DOCUMENT NO. 246762



- 1856 - The original Public Land Survey was completed by A. H. Runyon. A wood post was set to mark the corner with reference made to three bearing trees.
- 1930 - E. L. Higgins, McLeod County Surveyor, found an old wood stake at the corner. He measured the distance to the north quarter corner of Section 31 to be 2636.3 ft.
- 1939 - Old survey notes show the distance to the north quarter corner of Section 31 to be 2636.8 ft.
- 1949 - Lew Merrill, surveyor, measured 2636.8 ft. to the north quarter corner of Section 31 and 2653.7 ft. to the east quarter corner of Section 31.
- 1967 - Lew Merrill recovered a re-rod at the corner.
- 1971 - Dickman Knutson, McLeod County Surveyor, found a 1/2" diameter iron pipe with a re-rod below it at the corner.
- 1981 - Willard Pellinen, McLeod County Surveyor, replaced the iron pipe and the re-rod with a McLeod County cast iron monument and set reference ties.
- 1984 - Willard Pellinen measured 2637.27 ft. to the north quarter corner and 2651.85 ft. to the east quarter corner of Section 31.
- 1989 - Willard Pellinen recovered the cast iron monument about 4" below the road surface and set additional reference ties.
- 1991 - A Mn/DOT survey crew (Gene East, crew chief) found the cast iron monument about 3" below the road surface. It is located about 3 ft. south of the centerline of an east/west road.

The cast iron monument is accepted as the corner location because it fits old surveys, fits a long standing occupation line reasonably well, and there is a fair chain of evidence showing that this location has been perpetuated for at least 61 years. There is a possibility that the wood stake found in 1930 was the original corner.

For additional information, contact the Mn/DOT Surveys Section at Willmar, Mn 56201.



OFFICE OF COUNTY RECORDER  
McLEOD COUNTY MINNESOTA

McLEOD  
COUNTY

2

DOCUMENT NUMBER A-342595

CERTIFIED FILED AND/OR RECORDED ON  
May 10, 2004, AT 12:00:00 PM

LYNN ETTIE SCHRUPP, COUNTY RECORDER  
Fees:

DUPLICATE INFORMATION	\$ .50
EQUIPMENT FUND	3.00
SURCHARGE	4.50
SURCHARGE ERER	.50
GENERAL ABSTRACT	12.00
Total	\$20.50

Received from/return to:

MN DEPT OF TRANSPORTATION  
2505 TRANSPORTATION ROAD  
P O BOX 768  
WILLMAR, MN 56201- 0768

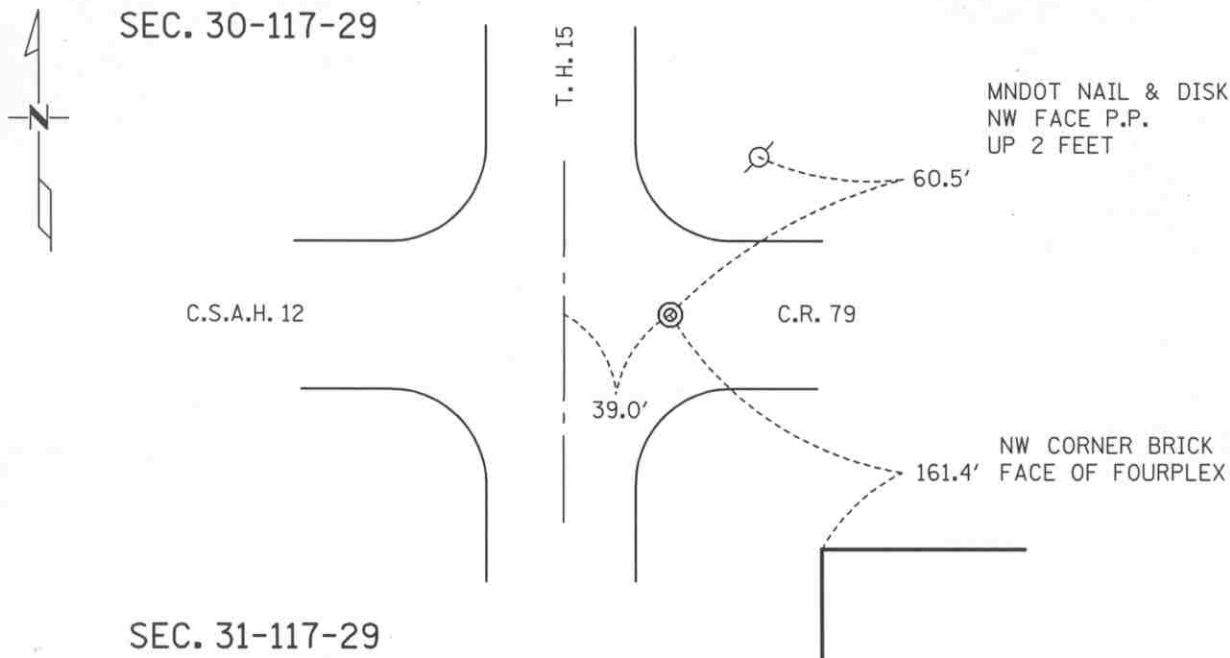
## CERTIFICATE OF LOCATION OF GOVERNMENT CORNER

NORTH QUARTER Corner of Section 31, Township 117 N., Range 29 W.

5th Principal Meridian, State of Minnesota, County of McLEOD

At the corner location shown on the sketch:

- ☒ On JUNE, 2003 found a 3/4 Inch Iron pin at bituminous surface of road  
DATE near centerline of county road 79.
- ☒ left monument as found ☐ lowered monument ☐ removed monument (explain)
- ☐ On \_\_\_\_\_ placed a \_\_\_\_\_  
DATE



Statement of evidence for this corner location is on back of this page.

I hereby certify that this document was researched and prepared by me or under my direct supervision.

Signature Martin J. Schlager

Date 5-07-04

License No. 24640

Title: ☒ Land Surveyor ☐ Professional Engineer ☐ County Surveyor ☐ County Engineer

## Certificate of Location of Government Corner

North Quarter Corner, Section 31, Township 117 North, Range 29 West

- 1856 A. H. Runyon, Government Land Office completed Original Public Land survey. A wood post was set, and reference ties to 2 bearing trees.
- 1919 E. L. Higgins, McLeod County Surveyor, measured a distance of 2637.6 feet to the northeast corner of Section 31.
- 1922 Carlisle Madson, Sr., McLeod County Surveyor, measured 5184.8 feet to the north quarter corner of Section 30.
- 1943 The Minnesota Highway Department right of way map shows an iron pin at the corner and 42.7 feet easterly of T. H. 15 P.O.C. 1344+58.0.
- 1958 HANSEN'S NORTH HIGH ADDITION, in the County Records Office. Plat shows an iron monument for the Quarter Corner.
- 1960 WILLARD'S SUBDIVISION, in the County Records Office. Plat shows an iron Pipe for the Quarter corner.
- 1960's Lew Merrill, former McLeod County Surveyor, said there is an iron pipe at the corner, east of State Highway No. 15. Used by him and by other surveyors for 40 to 50 years. New iron pipe set when old pipe was destroyed by road construction.
- 1971 Dickman Knutson, McLeod County Surveyor, replaced the iron pipe with a McLeod County cast iron monument. New reference ties were set.
- 1978 BOYLE'S ADDITION, in the County Records Office. Plat shows a McLeod County cast iron monument at the Quarter Corner.
- 1989 Willard Pellinen, McLeod County Surveyor, found the cast iron monument in good condition and 2 remaining reference ties. New reference ties were set.
- 1991 Mn/DOT survey crew (Gene East, crew chief) found a PK nail and replaced with a 3/4 inch iron pin. Chain ties were updated.
- 2003 Matthew Schlagel, Mn/DOT Land Surveyor, found the iron pin in good condition and updated chain ties.

For additional information, contact the Mn/DOT Surveys Section at Willmar, Mn 56201

**A-342595**



OFFICE OF COUNTY RECORDER  
MCLEOD COUNTY MINNESOTA

MCLEOD  
COUNTY

A-342604

DOCUMENT NUMBER A-342604

CERTIFIED FILED AND/OR RECORDED ON  
May 10, 2004, AT 12:00:00 PM

LYNN ETTIE SCHRUPP, COUNTY RECORDER  
Fees:

DUPLICATE INFORMATION	\$5.00
EQUIPMENT FUND	3.00
SURCHARGE	4.50
SURCHARGE ERER	.50
GENERAL ABSTRACT	12.00
Total	\$20.50

Received from/return to:

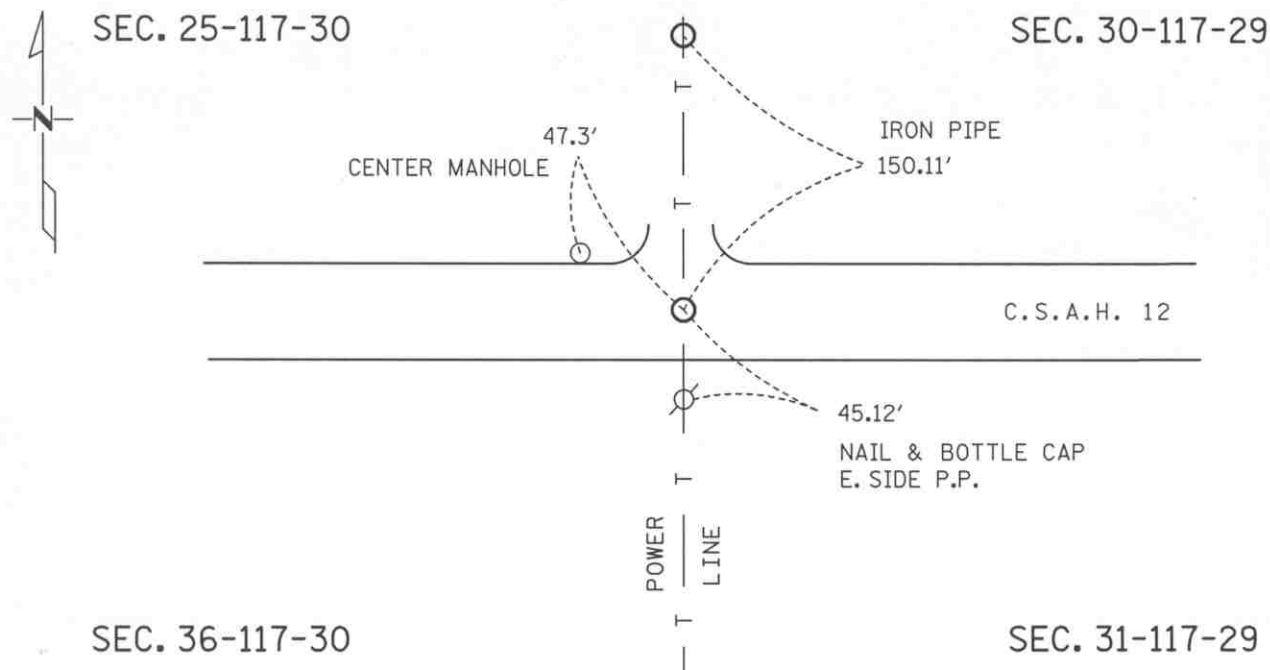
MN DEPT OF TRANSPORTATION  
2505 TRANSPORTATION ROAD  
P O BOX 768  
WILLMAR, MN 56201- 0768

## CERTIFICATE OF LOCATION OF GOVERNMENT CORNER

NORTHEAST Corner of Section 36, Township 117 N., Range 30 W.  
5th Principal Meridian, State of Minnesota, County of McLEOD

At the corner location shown on the sketch:

- ☒ On JUNE, 2003 found a 3/4 Inch Iron pipe 0.3 feet below the road surface.  
DATE
- ☒ left monument as found ☐ lowered monument ☐ removed monument (explain)
- ☐ On \_\_\_\_\_ placed a \_\_\_\_\_  
DATE



Statement of evidence for this corner location is on back of this page.

I hereby certify that this document was researched and prepared by me or under my direct supervision.

Signature Matthew J. Schlager Date 5-07-04 License No. 24640  
Title: ☒ Land Surveyor ☐ Professional Engineer ☐ County Surveyor ☐ County Engineer

## Certificate of Location of Government Corner

Northeast Corner, Section 36, Township 117 North, Range 30 West

- 1855 John Ryan, completed Original Public Land survey. A wood post was set and reference ties to 4 bearing trees.
- 1933 Survey shows a 3/8 inch steel rod beside an old post stub and a stone on end at the corner.
- 1967 Dickman Knutson, McLeod County Surveyor, found a steel rod and a stone. L.H. Merrill, surveyor, says this is the same corner used in 1933 and before. Knutson replaced the rod and stone with a McLeod County cast iron monument and made reference ties.
- 1978 BOYLE'S ADDITION, in the County Records Office. Plat shows a McLeod County cast iron monument at the Northeast Corner.
- 1989 Willard Pellinen, McLeod County Surveyor, found the cast iron monument in good condition but the reference ties were destroyed. New ties were made.
- 1993 Mn/DOT survey crew (Gene East, crew chief) found the cast iron monument in good condition.
- Jeff Rausch, McLeod County Surveyor, set 3/4 Iron Pipe from ties after road construction.
- 2004 Matthew Schlagel, Mn/DOT Land Surveyor, found a 3/4 inch iron pipe 0.3 feet below the surface of a newer bituminous road, and updated chain ties.

For additional information, contact the Mn/DOT Surveys Section at Willmar, Mn 56201

**A-342604**



OFFICE OF COUNTY RECORDER  
MCLEOD COUNTY MINNESOTA

MCLEOD  
COUNTY

2

DOCUMENT NUMBER A-342593

CERTIFIED FILED AND/OR RECORDED ON  
May 10, 2004, AT 12:00:00 PM

LYNN ETTE SCHRUPP, COUNTY RECORDER  
Fees:

DUPLICATE INFORMATION	\$ .50
EQUIPMENT FUND	3.00
SURCHARGE	4.50
SURCHARGE ERER	.50
GENERAL ABSTRACT	12.00
Total	\$20.50

Received from/return to:

MN DEPT OF TRANSPORTATION  
2505 TRANSPORTATION ROAD  
P O BOX 768  
WILLMAR, MN 56201- 0768

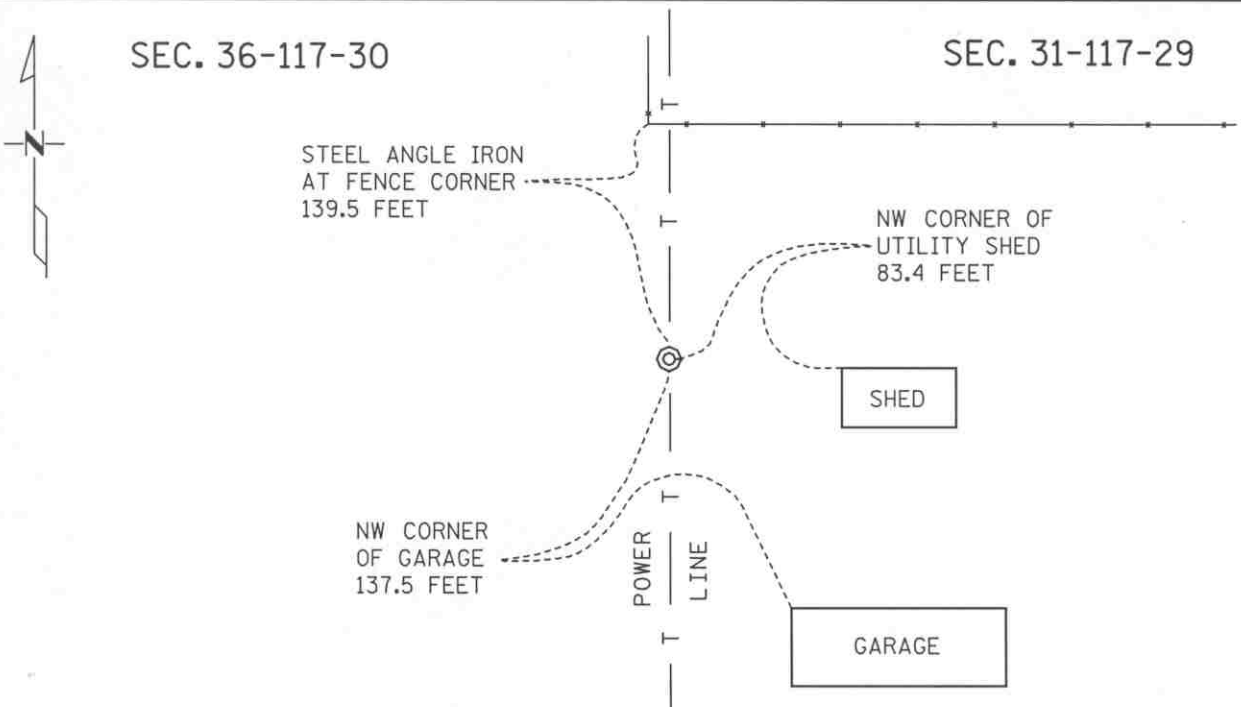
## CERTIFICATE OF LOCATION OF GOVERNMENT CORNER

East Quarter Corner of Section 36, Township 117 N., Range 30 N.

5th Principal Meridian, State of Minnesota, County of McLeod

At the corner location shown on the sketch:

- ☒ On June 2003 found an Cast Iron Monument at ground surface  
DATE
- ☒ left monument as found ☐ lowered monument ☐ removed monument (explain)
- ☐ On placed a  
DATE



Statement of evidence for this corner location is on back of this page.

I hereby certify that this document was researched and prepared by me or under my direct supervision.

Signature Matthew J. Schlager

Date 5-07-04

License No. 24640

Title: ☒ Land Surveyor ☐ Professional Engineer ☐ County Surveyor ☐ County Engineer

## Certificate of Location of Government Corner

East Quarter Corner, Section 36, Township 117 North, Range 30 West

- 1855 John Ryan, Government Land Office completed Original Public Land survey. A wood post was set, and reference ties to 2 bearing trees.
- 1879 NORTH HALF OF HUTCHINSON., in the County Records Office. Plat depicts that the quarter corner is the northeast corner of the plat, with no mention of the type of monument.
- 1892 There was a controversy as to where the quarter corner should be. John W. Hutchinson claimed he was the owner of a tract of land described as beginning at the Southwest corner of Section 31-T117-R29; thence running north 137 feet; thence east 1630 feet; south 92 feet; thence west 1630 feet to the point of beginning. Esther White claimed she was the owner of Block 8 in the North half of Hutchinson, which is part of the land in question. White claimed the land Hutchinson claimed is the north end of the land she owned. The court found in favor of White, but said the evidence was not very satisfactory, but the burden of proof rested upon Hutchinson to prove that the line claimed by him was the true one.
- 1968 Dickman Knutson, McLeod County Surveyor, set a temporary east quarter corner half way between the section corners on line with the southerly extension of the fence. This fell about 137 feet south of the fence corner. This fence corner has been accepted as the northwest corner of the North Half of Hutchinson.
- 1960's Lew Merrill, former McLeod County Surveyor, said the corner falls 135 to 140 feet south of the fence corner and in the 1930's he set a re-rod at the corner.
- 1969 Dickman Knutson, McLeod County Surveyor, dug around the temporary quarter corner and about 2 feet south found an old rotten wood post down 2 feet, with a re-rod on one side and an old rotten wood stake on the other side. Knutson checked monumentation and occupation lines in section 36 and what he found checked fairly well with the quarter corner being at the found post. Knutson set a McLeod County cast iron monument in place of the post and took reference ties. The found occupation lines and monumentation included 3 iron monuments found by Roy Hanson in 1967 and the plat of Johnson's Court, platted in 1957 by A. S. Miller.
- 1989 Willard Pellinen, McLeod County Surveyor, found the cast iron monument in good condition but the reference ties were gone. New ties were made.
- 2003 Matthew Schlagel, Mn/DOT Land Surveyor, found the cast iron monument in good condition and updated ties.

For additional information, contact the Mn/DOT Surveys Section at Willmar, Mn 56201.

**A-342593**



OFFICE OF COUNTY RECORDER  
MCLEOD COUNTY MINNESOTA



A-342598

DOCUMENT NUMBER A-342598

CERTIFIED FILED AND/OR RECORDED ON  
May 10, 2004, AT 12:00:00 PM

LYNN ETTIE SCHRUPP, COUNTY RECORDER  
Fees:

DUPLICATE INFORMATION	\$ .50
EQUIPMENT FUND	3.00
SURCHARGE	4.50
SURCHARGE ERER	.50
GENERAL ABSTRACT	12.00
Total	\$20.50

Received from/return to:

MN DEPT OF TRANSPORTATION  
2505 TRANSPORTATION ROAD  
P O BOX 768  
WILLMAR, MN 56201- 0768

## CERTIFICATE OF LOCATION OF GOVERNMENT CORNER

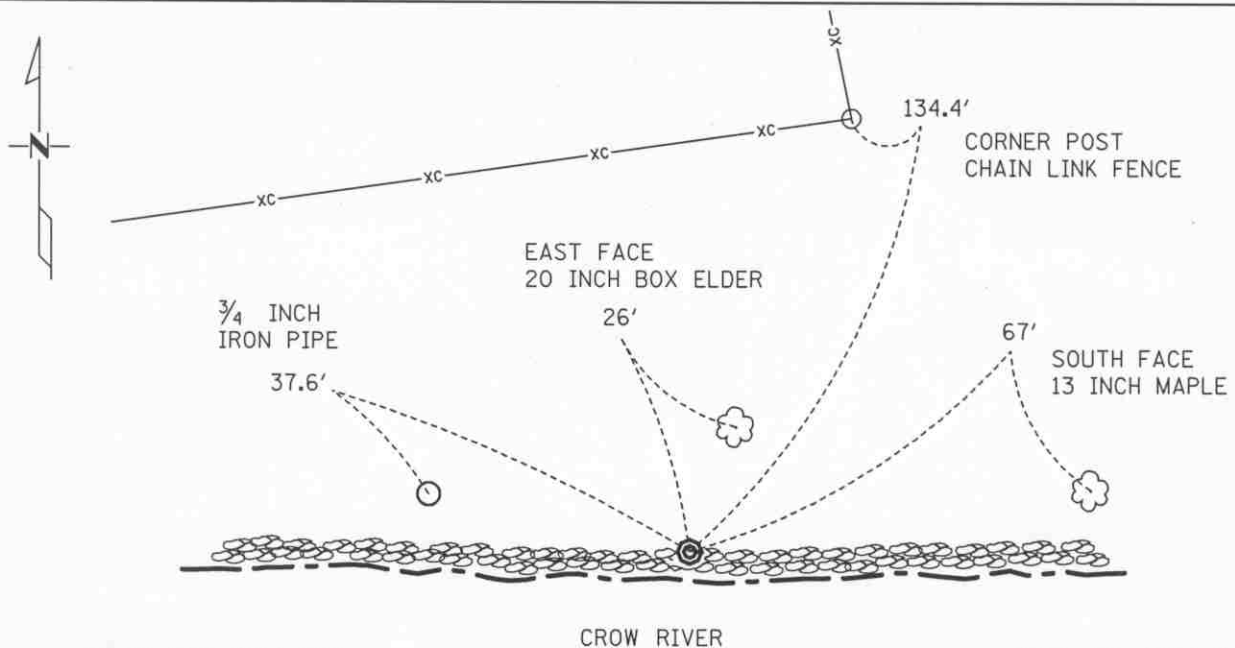
REFERENCE MONUMENT ON East line of Section 36, Township 117 N., Range 30 W.  
5th Principal Meridian, State of Minnesota, County of McLEOD

At the corner location shown on the sketch:

☒ On JUNE, 2003 found a Cast Iron Monument at the surface in the top of the  
DATE riprap of the bank of the Crow River.

☒ left monument as found ☐ lowered monument ☐ removed monument (explain)

☐ On \_\_\_\_\_ placed a \_\_\_\_\_  
DATE



SEC. 36-117-30

SEC. 31-117-29

Statement of evidence for this corner location is on back of this page.

I hereby certify that this document was researched and prepared by me or under my direct supervision.

Signature Matthew J. Schlager Date 5-07-04 License No. 24640  
Title: ☒ Land Surveyor ☐ Professional Engineer ☐ County Surveyor ☐ County Engineer



## **Certificate of Location of Government Corner**

Ref. Monument of East line, Section 36, Township 117 North, Range 30 West

- 1970 Dickman Knutson, McLeod County Surveyor, set a cast iron monument near the north shore of the Crow River on the east of section 36. The Southeast corner of Section 36 falls in the river. Made chain ties.
- 1989 Willard Pellinen, McLeod County Surveyor, found the cast iron monument in good condition and made new reference ties.
- 1993 Mn/DOT survey crew (Gene East, crew chief) found the cast iron monument in good condition.
- 2003 Matthew Schlagel, Mn/DOT Land Surveyor, found the cast iron monument in good condition and updated ties.

For additional information, contact the Mn/DOT Surveys Section at Willmar, Mn 56201

**A-342598**



OFFICE OF COUNTY RECORDER  
McLEOD COUNTY MINNESOTA



2

DOCUMENT NUMBER A-342594

CERTIFIED FILED AND/OR RECORDED ON  
May 10, 2004, AT 12:00:00 PM

LYNN ETTE SCHRUPP, COUNTY RECORDER  
Fees:

DUPLICATE INFORMATION	\$5.00
EQUIPMENT FUND	3.00
SURCHARGE	4.50
SURCHARGE ERER	.50
GENERAL ABSTRACT	12.00
Total	\$20.50

Received from/return to:

MN DEPT OF TRANSPORTATION  
2505 TRANSPORTATION ROAD  
P O BOX 768  
WILLMAR, MN 56201- 0768

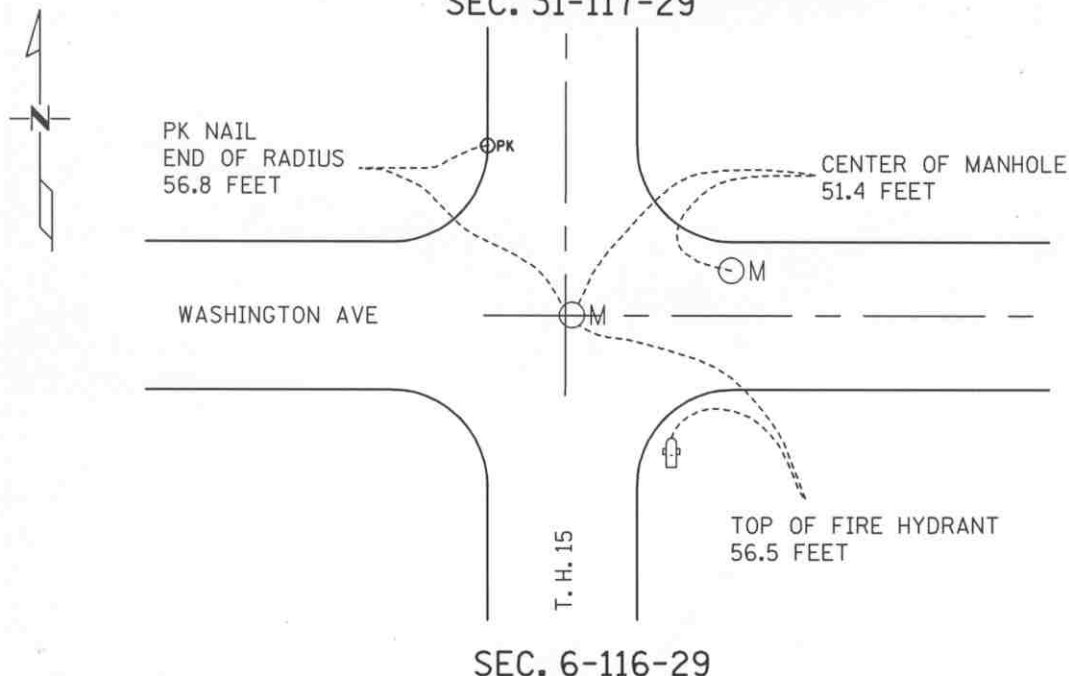
## CERTIFICATE OF LOCATION OF GOVERNMENT CORNER

SOUTH QUARTER Corner of Section 31, Township 117 N., Range 29 N.  
5th Principal Meridian, State of Minnesota, County of McLEOD

At the corner location shown on the sketch:

- ☐ On \_\_\_\_\_ found an \_\_\_\_\_  
DATE
- ☐ left monument as found ☐ lowered monument ☐ removed monument (explain)
- ☒ On June 2003 placed a Set out coordinate position on Manhole,  
DATE  
and made chain ties.

SEC. 31-117-29



Statement of evidence for this corner location is on back of this page.

I hereby certify that this document was researched and prepared by me or under my direct supervision.

Signature Matthew J. Schlager

Date 5-07-04

License No. 24640

Title: ☒ Land Surveyor ☐ Professional Engineer ☐ County Surveyor ☐ County Engineer

## Certificate of Location of Government Corner

South Quarter Corner, Section 31, Township 117 North, Range 29 West

- 1855 John Ryan, Government Land Office completed Original Public Land Survey of the fourth Standard Parallel. Set Quarter section post. Deposited charcoal, dug pits and trench, built mound and planted Osage orange seed at corner of mound.
- 1879 NORTH HALF OF HUTCHINSON., in the County Records Office. Plat shows a stone at the position of Quarter Corner. The stone is drawn at the centerlines of Main Street and Washington Avenue. Statement on the plat by Lewis Harrington a Surveyor saying, "I have carefully compared the above Plat of the Townsite of Hutchinson North Half McLeod County Minn. With the original Survey made by me in the year 1859, and that the same is a correct plat of said North Half of said Townsite".
- 1960's Lew Merrill, former McLeod County Surveyor from 1943 to 1955, said the quarter corner is the centerline intersection of Main Street and Washington Avenue as platted.
- Willard Pellinen, McLeod County Surveyor, measured 2641.56 feet to the southwest corner and 2672.97 feet to the southeast corner of Section 31. They also measured 5300.94 feet to the north quarter corner of Section 31. With an angle of 92 degrees 16 minutes 48 seconds from the southwest corner to the north quarter corner and an angle of 86 degrees 05 minutes 33 seconds from the southeast corner to the north quarter corner.
- 1993 Mn/DOT survey crew (Gene East, crew chief) located and shot the intersection of the concrete joints (centerline intersection) of Main Street and Washington Avenue. The resulting coordinates were used for the position of the section corner.
- 2003 Matthew Schlagel, Mn/DOT Land Surveyor, set out the coordinate position, which is on a manhole cover. Chain ties were updated.

For additional information, contact the Mn/DOT Surveys Section at Willmar, Mn 56201

**A-342594**



OFFICE OF COUNTY RECORDER  
McLEOD COUNTY MINNESOTA

DOCUMENT NUMBER A-342596

CERTIFIED FILED AND/OR RECORDED ON  
May 10, 2004, AT 12:00:00 PM

LYNN ETTE SCHRUPP, COUNTY RECORDER  
Fees:

DUPLICATE INFORMATION	\$ .50
EQUIPMENT FUND	3.00
SURCHARGE	4.50
SURCHARGE ERER	.50
GENERAL ABSTRACT	12.00
Total	\$20.50

Received from/return to:

MN DEPT OF TRANSPORTATION  
2505 TRANSPORTATION ROAD  
P O BOX 768  
WILLMAR, MN 56201-0768

## CERTIFICATE OF LOCATION OF GOVERNMENT CORNER

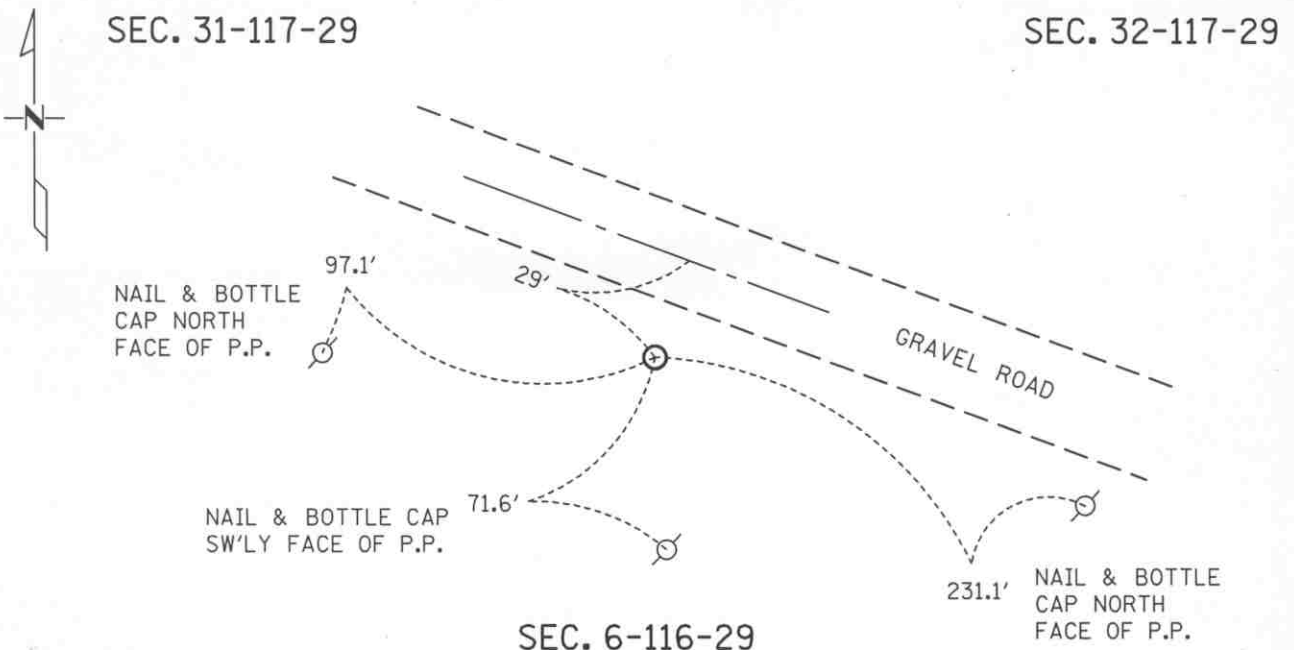
SOUTHEAST Corner of Section 31, Township 117 N., Range 29 W.  
5th Principal Meridian, State of Minnesota, County of McLEOD

At the corner location shown on the sketch:

☒ On JUNE, 2003 found a Iron pipe with a 4 inch diameter brass cap on top 0.3 feet  
DATE below the ground surface.

☒ left monument as found ☐ lowered monument ☐ removed monument (explain)

☐ On DATE placed a DATE



Statement of evidence for this corner location is on back of this page.

I hereby certify that this document was researched and prepared by me or under my direct supervision.

Signature Matthew J. Schlueter

Date 5-07-04

License No. 24640

Title: ☒ Land Surveyor ☐ Professional Engineer ☐ County Surveyor ☐ County Engineer

Statement of Evidence:

Southeast Corner Section 31, T 117 N, R 29 W

- 1855 - The original Public Land Survey of the Fourth Standard Parallel was completed by John Ryan. A wood post was set over a deposit of charcoal in a dirt mound to mark the corner. Trenches and pits were dug to build the mound. Osage orange was planted at the corners of the mound.
- 1928 - E. L. Higgins, McLeod County Surveyor, indicated that there was a stone at this corner in his survey notes.
- 1937 - The Minnesota Highway Department right of way map depicts the corner to be about 1130 ft. southerly of T.H. 7 P.O.C. 28+60 as scaled on the map. No reference was made as to the type of monument at the corner.
- 1968 - McCombs Knutson Associates found an iron pipe with a McLeod County brass cap on top. This monument was probably set by Carlisle Madsen, Sr. in the 1920's when he was the McLeod County Surveyor. It is typical of the monuments he set during his tenure as county surveyor.
- 1989 - Willard Pellinen, McLeod County Surveyor, found the iron pipe with a brass cap on top about one foot below the surface. The brass cap had been damaged but the iron pipe was in good condition. New reference ties were set.
- 1991 - A Mn/DOT survey crew (Gene East, crew chief) found an iron pipe with a 2" diameter brass cap on top at the surface. It is located 1141.33 ft. southerly of T.H. 7 P.O.C. 28+54.72 as measured along the section line from its intersection with the centerline of T.H. 7.

The iron pipe is accepted as the corner location because it appears to have marked the corner location for at least 62 years.

Statement of Evidence:

**Certificate of Location of Government Corner**

Southeast Corner, Section 31, Township 117 North, Range 29 West

- 2003 Matthew Schlagel, Mn/DOT Land Surveyor, found the iron pipe with a 4 inch diameter brass cap on top about 0.3 feet below the surface. Chain ties were updated.

# CERTIFICATE OF LOCATION OF GOVERNMENT CORNER

EAST QUARTER Corner of Section 32, Township 117N, Range 29W, 5<sup>th</sup> P.M.

STATE OF MINNESOTA, County of MCLEOD

At the corner location shown on the sketch:

☒ On AUG 5, 1991 found a CAST IRON MONUMENT ABOUT 12" BELOW  
DATE THE GROUND SURFACE

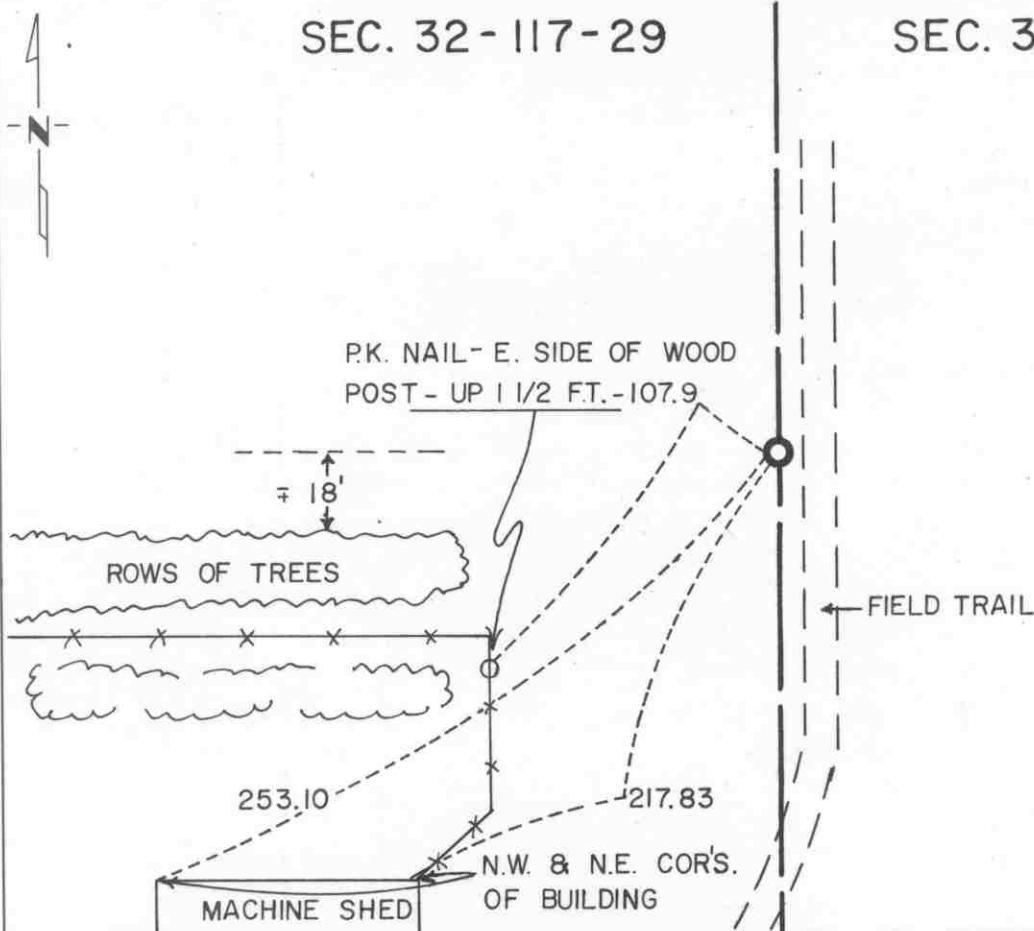
☒ left monument as found, ☐ lowered monument, ☐ removed monument (explain)

☐ On \_\_\_\_\_ placed a \_\_\_\_\_  
DATE

## SKETCH OF REFERENCE TIES

SEC. 32-117-29

SEC. 33-117-29



Statement of evidence relative to this corner location is on back of page.

I hereby certify that this document and the data contained herein was prepared by me or under my direct supervision.

Robert C. Jones  
SIGNATURE

7-22-92  
DATE

Registration No. 11864

☒ Land Surveyor, ☐ Professional Engineer

☐ County Surveyor, ☐ County Engineer

OFFICE OF THE COUNTY RECORDER

County of McLeod

I hereby certify that this document was filed in the Co. Recorders office at 9 A. M. on the 29<sup>th</sup> day of July A.D., 19 92

County Recorder Harmon Ostlie

By \_\_\_\_\_, Deputy

DOCUMENT NO. 246766

- 1856 - The original Public Land Survey was completed by A. H. Runyon. A wood post was set in a dirt mound to mark the corner. A pit was dug 8 links to the east.
- 1968 - Dickman Knutson, McLeod County Surveyor, searched for the corner but did not find it. He set a cast iron monument to mark the corner according to the testimony of Mr. Leroy Christensen. His father had owned the farm since 1910. His father had said that the corner was in line with a fence to the north and that there was an angle in the section line at the quarter corner. The cast iron was set at the intersection of two lines. One being the southerly extension of a north/south fence line to the north and the easterly extension of a line starting at the west quarter corner and passing through an iron found at the center of section. This position ended up being within 3.5 ft. of being midway between section corners.
- 1991 - R. C. Jones, Registered Land Surveyor with Mn/DOT, recovered the cast iron monument about 1 foot below the ground.

The cast iron monument is accepted as the corner location because it fit old occupation lines as pointed out by the old landowner. The present owner pointed out the general location of where he had seen the cast iron monument. When the monument was found, it proved to fit the occupation line to the north quite well. It is located 57.44 ft. east and 0.91 ft. north of the lost location.

For additional information, contact the Mn/DOT Surveys Section in Willmar, Mn 56201.

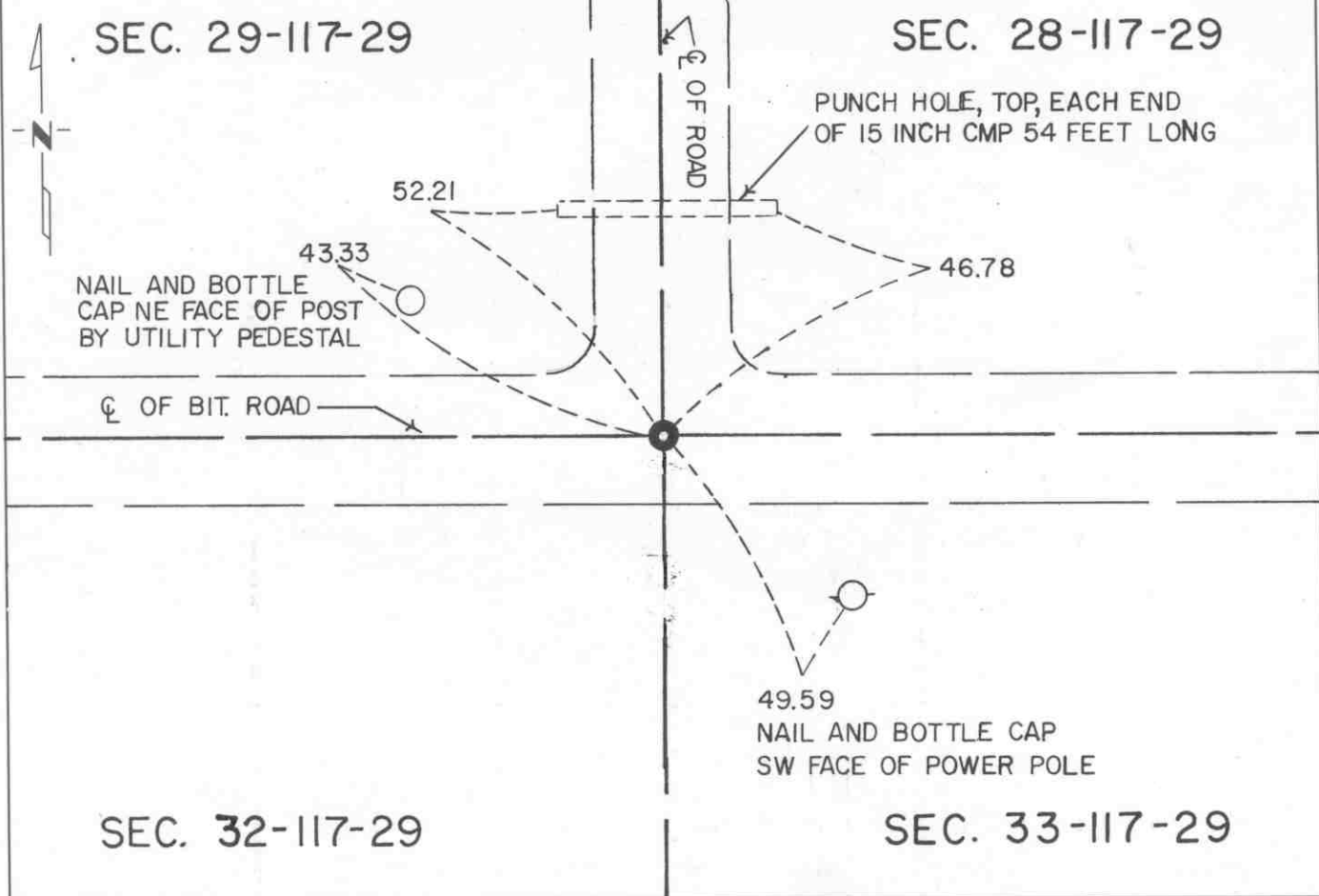
# CERTIFICATE OF LOCATION OF GOVERNMENT CORNER

NORTHEAST Corner of Section 32, Township 117 N, Range 29 W, 5<sup>th</sup> P.M.  
 STATE OF MINNESOTA, County of McLEOD

At the corner location shown on the sketch:

- ☒ On FEB. 1991 found a CAST IRON MONUMENT 8" BELOW  
DATE THE ROAD SURFACE  
☒ left monument as found, ☐ lowered monument, ☐ removed monument (explain)
- ☒ On FEB. 1991 placed a 60 PENNEY SPIKE DIRECTLY ABOVE THE CAST IRON  
DATE MONUMENT AT THE ROAD SURFACE

SKETCH OF REFERENCE TIES



Statement of evidence relative to this corner location is on back of page.

I hereby certify that this document and the data contained herein was prepared by me or under my direct supervision.

Robert J. Jones 7-22-92  
SIGNATURE DATE

Registration No. 11864

- ☒ Land Surveyor, ☐ Professional Engineer  
☐ County Surveyor, ☐ County Engineer

OFFICE OF THE COUNTY RECORDER

County of McLeod

I hereby certify that this document was filed in the Co. Recorders office at 9 A. M. on the 29<sup>th</sup> day of July A.D., 1992

County Recorder Armen Estlie

By \_\_\_\_\_, Deputy

DOCUMENT NO. 246765



- 1856 - The original Public Land Survey was completed by A. H. Runyon. A charred stake was set in a dirt mound to mark the corner. The mound was raised by digging a trench as per instructions. Apple seeds were planted at the southeast corner of the mound.
- 1898 - E. L. Higgins, McLeod County Surveyor, found an iron post in the road and measured 2626 feet to an iron post at the east quarter corner of Section 29.
- 1967 - Lew Merrill, former McLeod County Surveyor, stated that there was an iron post at the corner which both Higgins and himself had used.
- 1968 - Dickman Knutson, McLeod County Surveyor, found an iron post at the intersection of road centerlines.
- 1969 - Dickman Knutson recovered the post and used it in a survey.
- 1983 - Willard Pellinen, McLeod County Surveyor, recovered the iron post and replaced it with a McLeod County cast iron monument.
- 1985 - Willard Pellinen measured the east line of the Southeast Quarter of Section 29 and found the distance to be 2627.73 ft. as compared to Higgins' 1898 survey distance of 2626 feet.
- 1989 - Willard Pellinen recovered the cast iron monument in good condition along with the reference ties.
- 1991 - A Mn/DOT survey crew (Gene East, crew chief) found the cast iron monument about 8" below the road surface. He set a 60 penny spike over the monument at the road surface.

The cast iron monument is accepted as the corner location because it perpetuates the position of a monument that has marked this location for at least 93 years, it closely fits an old survey distance, and it fits long standing occupation lines; that is, the centerline of an east/west road and the centerline of a road to the north.

For additional information, contact the Mn/DOT Surveys Section at Willmar, Mn 56201.

# CERTIFICATE OF LOCATION OF GOVERNMENT CORNER

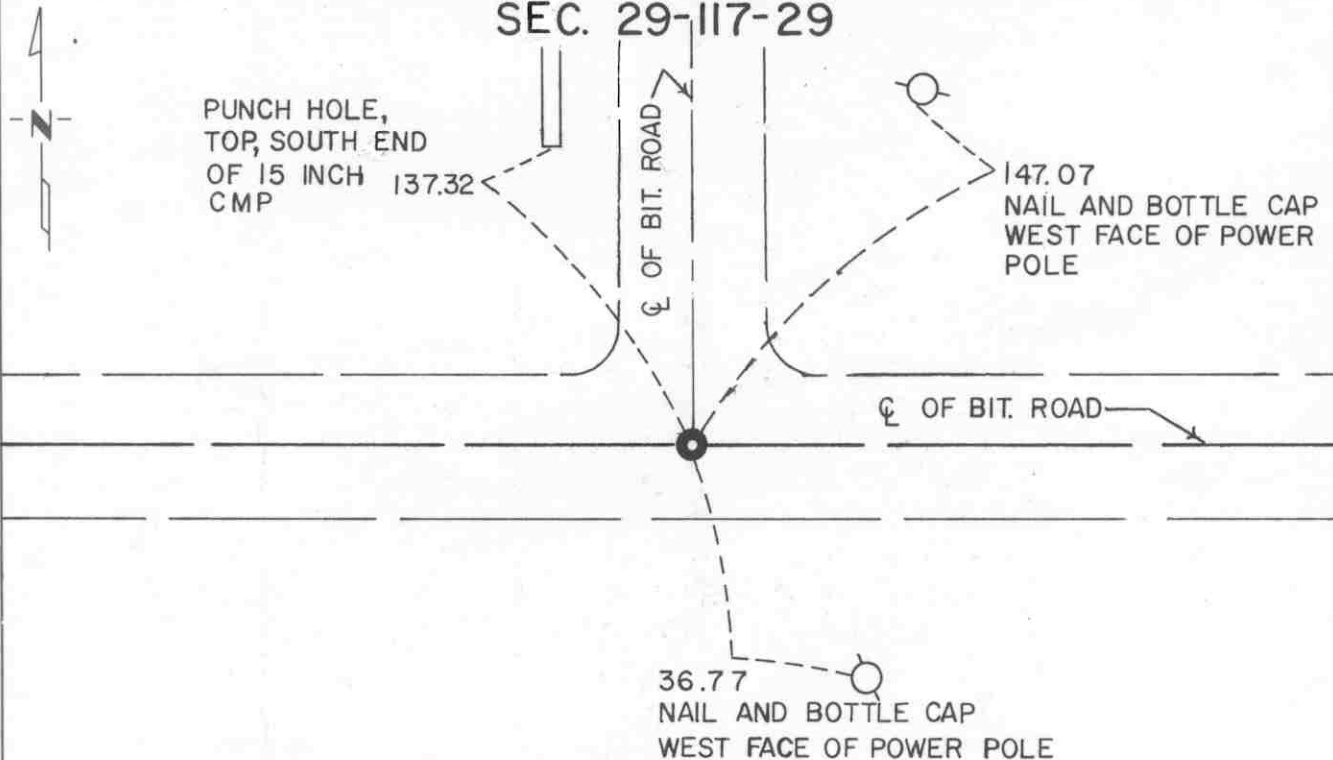
NORTH QUARTER Corner of Section 32, Township 117N, Range 29W, 5<sup>th</sup> P.M.  
STATE OF MINNESOTA, County of MCLEOD

At the corner location shown on the sketch:

- ☒ On FEB. 1991 found a CAST IRON MONUMENT ABOUT 3" BELOW  
DATE THE ROAD SURFACE
- ☒ left monument as found, ☐ lowered monument, ☐ removed monument (explain)
- ☒ On FEB. 1991 placed a P.K. NAIL AT THE ROAD SURFACE DIRECTLY OVER  
DATE THE CAST IRON MONUMENT

## SKETCH OF REFERENCE TIES

SEC. 29-117-29



SEC. 32-117-29

Statement of evidence relative to this corner location is on back of page.

I hereby certify that this document and the data contained herein was prepared by me or under my direct supervision.

Robert Jones 7-22-92  
SIGNATURE DATE

Registration No. 11864

- ☒ Land Surveyor, ☐ Professional Engineer  
☐ County Surveyor, ☐ County Engineer

## OFFICE OF THE COUNTY RECORDER

County of McLeod

I hereby certify that this document was filed in the Co. Recorders office at 9 A. .M. on the 29<sup>th</sup> day of July A.D., 1992

County Recorder Farmer Estlie

By \_\_\_\_\_, Deputy

DOCUMENT NO. 246768

- 1856 - The original Public Land Survey was completed by A. H. Runyon. A wood post was set to mark the corner with reference to two bearing trees.
- 1930 - E. L. Higgins, McLeod County Surveyor, showed in his survey notes that he set a steel stake 33 ft. south of the corner. His survey distance to the northwest corner of the section was 2636.3 ft.
- 1967 - Lew Merrill, former McLeod County Surveyor, stated that there is an iron pin at the corner which is located at the intersection of roads east, west, and north.
- 1971 - Dickman Knutson, McLeod County Surveyor, found a 1/2" diameter iron pipe over a 1/2" diameter iron pin. This location was within 1.5 ft. of being midway between the section corners. The distance to the northwest corner of the section was measured at 2636.91 ft. A McLeod County cast iron monument and reference ties were set.
- 1983 - Willard Pellinen, McLeod County Surveyor, found the cast iron monument but none of the old reference ties. New ties were set.
- 1989 - Willard Pellinen again recovered the cast iron monument and one reference tie. Additional ties were set.
- 1991 - A Mn/DOT survey crew (Gene East, crew chief) found the cast iron monument about 3" below the road surface. It was located at the intersection of centerlines of roads east, west, and north.

The cast iron monument is accepted as the corner location because it fits an old survey distance quite well, it fits long standing occupation lines, and it is 1.18 ft. west and 23.69 ft. north of the lost location.

For additional information, contact the Mn/DOT Surveys Section at Willmar, Mn 56201.

# CERTIFICATE OF LOCATION OF GOVERNMENT CORNER

SOUTH QUARTER Corner of Section 32, Township 117 N, Range 29 W, 5<sup>th</sup> P.M.

STATE OF MINNESOTA, County of MCLEOD

At the corner location shown on the sketch:

- ☒ On FEB. 1991  
DATE found a CAST IRON MONUMENT AT THE SURFACE
- ☒ left monument as found, ☐ lowered monument, ☐ removed monument (explain)
- ☐ On \_\_\_\_\_  
DATE placed a \_\_\_\_\_

## SKETCH OF REFERENCE TIES

SEC. 32-117-29

HOUSE

99.00

94.80

4<sup>th</sup> STANDARD PARALLEL

FORMER C. OF RR TRACKS

61.10

NAIL AND BOTTLE CAP  
IN POWER POLE

SEC. 5-116-29

Statement of evidence relative to this corner location is on back of page.

I hereby certify that this document and the data contained herein was prepared by me or under my direct supervision.

Robert G. Jans  
SIGNATURE  
7-22-92  
DATE

Registration No. 11864

☒ Land Surveyor, ☐ Professional Engineer

☐ County Surveyor, ☐ County Engineer

## OFFICE OF THE COUNTY RECORDER

County of McLeod

I hereby certify that this document was filed in the Co. Recorders office at 9 A. .M. on the 29<sup>th</sup> day of July, A.D., 1992

County Recorder Armen Ostlie

By \_\_\_\_\_, Deputy

DOCUMENT NO. 246769

- 1855 - The original Public Land Survey of the Fourth Standard Parallel was completed by John Ryan. A wood post was set above a deposit of charcoal in a dirt mound to mark the corner. A trench and pits were dug to build the mound. Osage orange was planted at the corners of the mound.
- 1930 - E. L. Higgins, McLeod County Surveyor, found a fence corner at the center of the section.
- 1937 - A Minnesota Highway Department right of way map shows that an iron pipe was found at or near the centerline of the Minnesota Western Railroad. It is depicted to be about 1100 ft. southerly of T.H. 7 P.O.T. 55+43 as scaled on the map.
- 1967 - Lew Merrill, former McLeod County Surveyor, stated that there is a large iron pipe at the center of the railroad to mark the quarter corner. He also stated that there is a fence corner at the center of section.
- 1968 - Dickman Knutson, McLeod County Surveyor, found a 1 1/2" diameter iron pipe at the center of the tracks below a railroad tie. The north/south quarter line, as defined by this pipe and the north quarter corner, passed through the fence corner at the center of section. The pipe was replaced with a McLeod County cast iron monument.
- 1989 - Willard Pellinen, McLeod County Surveyor, recovered the cast iron monument and the reference ties all in good condition. The monument was located at the center of the old railroad grade.
- 1991 - A Mn/DOT survey crew (Gene East, crew chief) found the cast iron monument at the surface of the Luce Line State Recreational Trail which is the abandoned railroad grade. It is located at the centerline of the grade. It is also located 1109.82 ft. southerly of T.H. 7 P.O.T. 55+52.39 as measured along the north/south quarter line.

The cast iron monument is accepted as the corner location because it perpetuates the position of a monument that marked the corner at least 54 years ago and it fits old occupation lines. It is 12.45 ft. east and 0.60 ft. north of the lost location.

For additional information, contact the Mn/DOT Surveys Section at Willmar, Mn 56201.

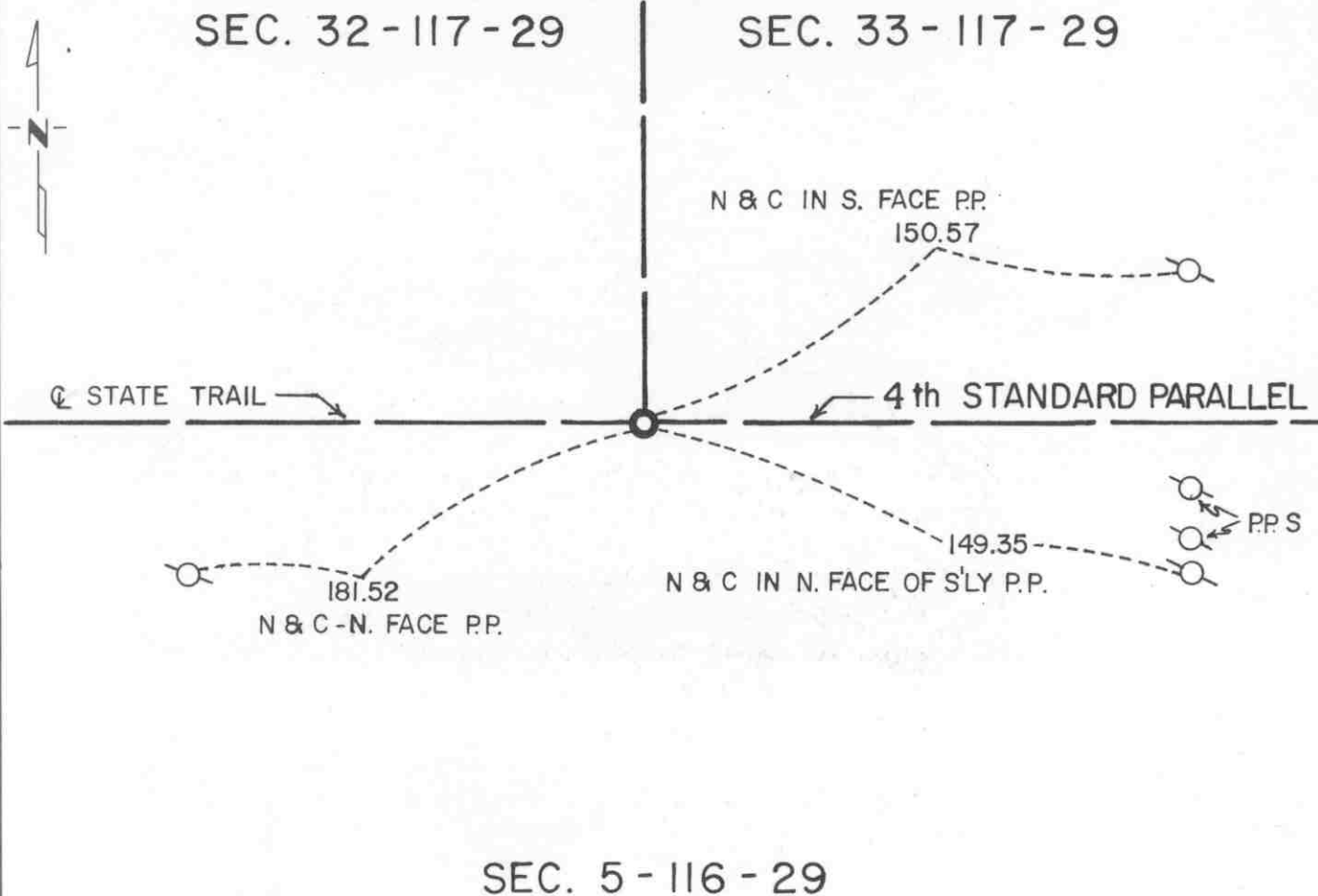
# CERTIFICATE OF LOCATION OF GOVERNMENT CORNER

SOUTHEAST Corner of Section 32, Township 117 N, Range 29 W, 5<sup>th</sup> P.M.  
STATE OF MINNESOTA, County of MCLEOD

At the corner location shown on the sketch:

- ☒ On FEB, 1991 found a CAST IRON MONUMENT AT THE SURFACE  
DATE
- ☐ left monument as found, ☐ lowered monument, ☐ removed monument (explain)
- ☐ On \_\_\_\_\_ placed a \_\_\_\_\_  
DATE

## SKETCH OF REFERENCE TIES



Statement of evidence relative to this corner location is on back of page.

I hereby certify that this document and the data contained herein was prepared by me or under my direct supervision.

Robert Jones 7-22-92  
SIGNATURE DATE

Registration No. 11864

- ☒ Land Surveyor, ☐ Professional Engineer  
☐ County Surveyor, ☐ County Engineer

## OFFICE OF THE COUNTY RECORDER

County of McLeod

I hereby certify that this document was filed in the Co. Recorders office at 9 A. .M. on the 29th day of July A.D., 1992

County Recorder Armen Estlie

By \_\_\_\_\_, Deputy

DOCUMENT NO. 246767

- 1855 - The original Public Land Survey of the Fourth Standard Parallel was completed by John Ryan. A wood post was set in a dirt mound to mark the corner. A pit was dug 8 links to the south to obtain dirt for the mound.
- 1937 - The Minnesota Highway Department right of way map shows that an iron pipe was found at or near the centerline of a railroad. It was depicted to be about 1355 ft. southerly of T.H. 7 P.O.T. 83+22 as scaled on the map.
- 1969- Dickman Knutson, McLeod County Surveyor, found a 1 1/2" diameter iron pipe and replaced it with a cast iron monument sometime later.
- 1990 - Willard Pellinen, McLeod County Surveyor, found the bottom of a cast iron monument at the corner. He set a new cast iron monument above the remains of the found one. Additional ties were also set. It was located at the centerline of the Luce Line State Recreational Trail which is the abandoned railroad grade.
- 1991 - A Mn/DOT survey crew (Gene East, crew chief) found the cast iron monument at the surface of the trail. It is located 1369.08 ft. south of T.H. 7 P.O.T. 82+61.57, as measured along the section line, at the centerline of the trail.

The cast iron monument is accepted as the corner location because it perpetuates the location of a monument found about 55 years ago that was probably set by the railroad many years previous to that and it is 822.98 feet west of the northeast corner of Section 5-116-29 as compared to the government distance of 821.70 feet.

For additional information, contact the Mn/DOT Surveys Section at Willmar, Mn 56201.



**CERTIFICATE OF LOCATION OF GOVERNMENT CORNER**

EAST QUARTER Corner of Section 33, Township 117 N, Range 29 W, 5<sup>th</sup> P.M.

STATE OF MINNESOTA, County of MCLEOD

At the corner location shown on the sketch:

☒ On AUG. 5, 1991 found a CAST IRON MONUMENT ABOUT 6" BELOW  
DATE THE GROUND SURFACE

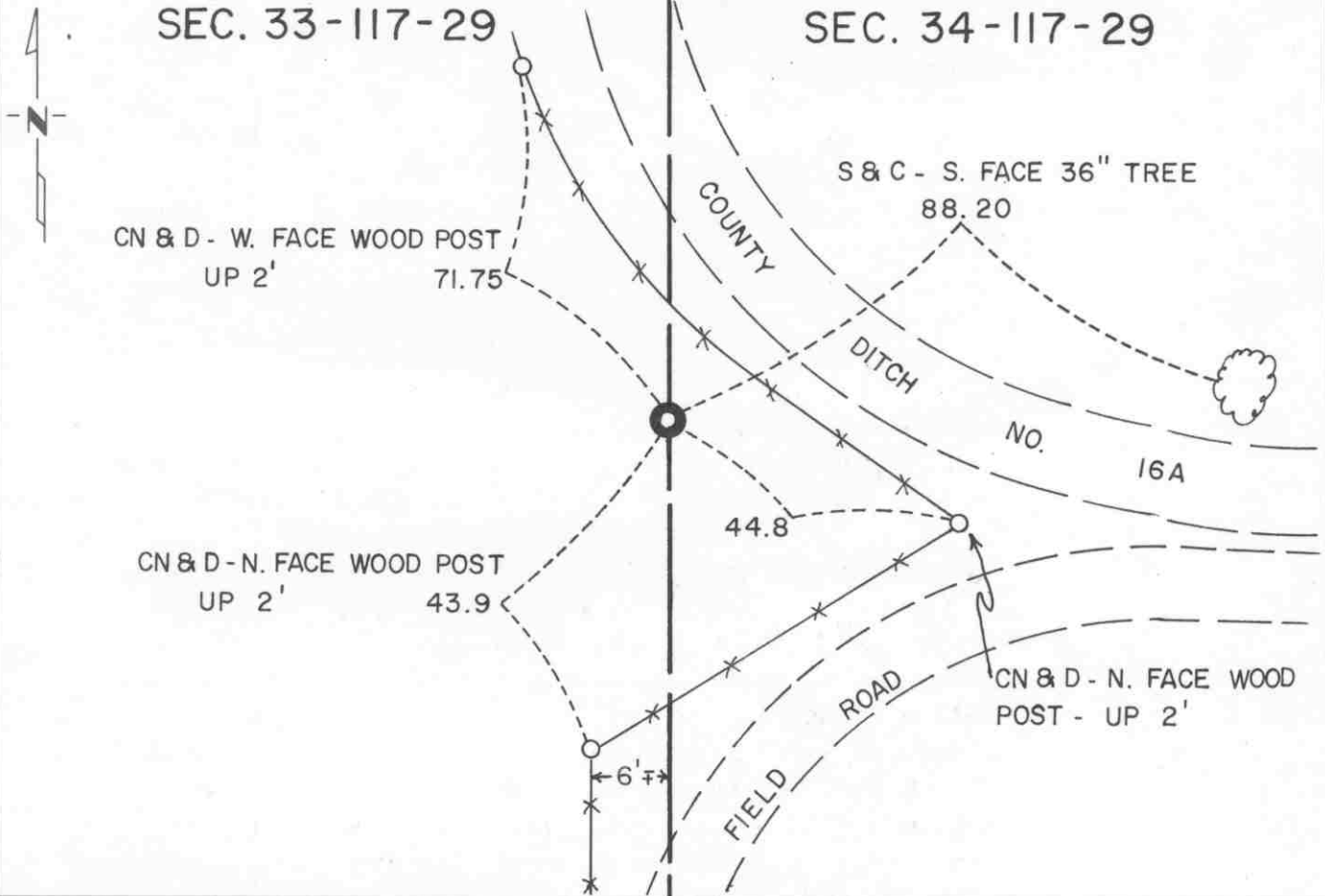
☒ left monument as found, ☐ lowered monument, ☐ removed monument (explain)

☐ On \_\_\_\_\_ placed a \_\_\_\_\_  
DATE

SKETCH OF REFERENCE TIES

SEC. 33-117-29

SEC. 34-117-29



Statement of evidence relative to this corner location is on back of page.

I hereby certify that this document and the data contained herein was prepared by me or under my direct supervision.

Robert Jones  
SIGNATURE

7-22-92  
DATE

Registration No. 11864

☒ Land Surveyor, ☐ Professional Engineer

☐ County Surveyor, ☐ County Engineer

OFFICE OF THE COUNTY RECORDER

County of McLeod

I hereby certify that this document was filed in the Co. Recorders office at 9 A. M. on the 29<sup>th</sup> day of July A.D., 1992

County Recorder Harmon Ostlie

By \_\_\_\_\_, Deputy

DOCUMENT NO. 246771



- 1856 - The original Public Land Survey was completed by A. H. Runyon. A charred stake was set in a dirt mound to mark the corner. A trench was dug to raise the mound as per instructions.
- 1937 - The Minnesota Highway Department right of way map depicts the corner to be about 2645 ft. northerly of T.H. 7 P.O.S.T. 101.2 ft. ahead of P.I. 138+54.8 as scaled on the map.
- 1974 - Dickman Knutson, McLeod County Surveyor, found a steel fence post about 6" below the ground. It was on line with the westerly extension of a fence line to the east. Adjacent landowners considered the fence to be on the east/west quarter line of Section 34. A line projected northerly from the found steel fence post to the northeast corner of the section passes within 1.5 ft. of a steel fence post 1/4 mile to the north. According to the testimony of adjacent landowners, Carl Karg and Howard Christensen, the steel post 1/4 mile north is on the section line.
- 1975 - Dickman Knutson replaced the steel fence post with a McLeod County cast iron monument.
- 1991 - R. C. Jones, Registered Land Surveyor with Mn/DOT, recovered the cast iron monument about 6" below the ground. Additional reference ties were set. It was located about 9 ft. east of a short section of north/south fence line to the south and about in line with the centerline of a short east/west portion of a county ditch to the east.

The cast iron monument is accepted as the corner location because it fits old occupation lines that local landowners considered to be on two land lines and it is 0.95 ft. south and 13.33 ft. west of the lost location.

For additional information, contact the Mn/DOT Surveys Section at Willmar, Mn 56201.

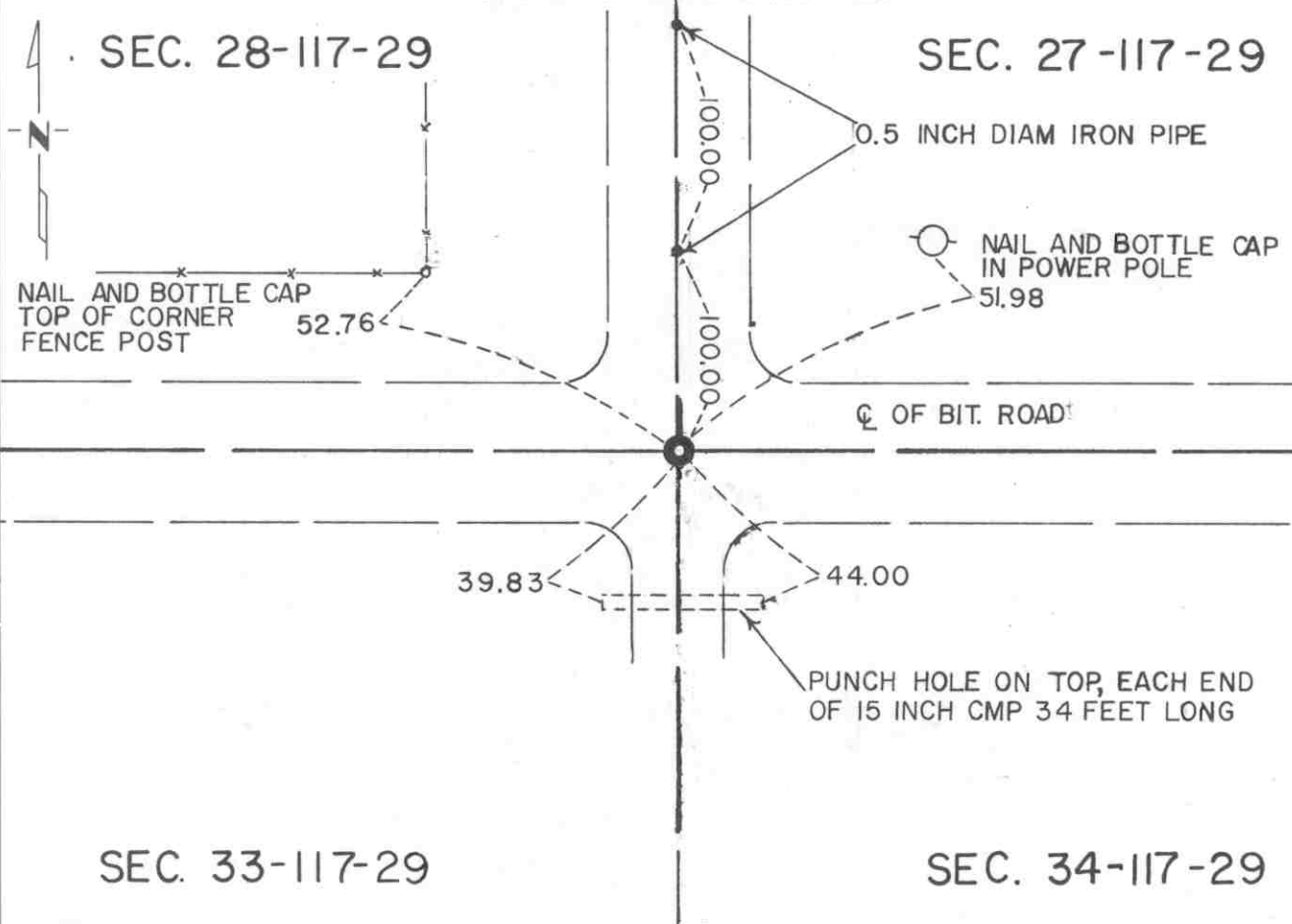
# CERTIFICATE OF LOCATION OF GOVERNMENT CORNER

NORTHEAST Corner of Section 33, Township 117 N, Range 29 W, 5<sup>th</sup> P.M.  
STATE OF MINNESOTA, County of MCLEOD

At the corner location shown on the sketch:

- ☒ On FEB. 1991 found a RAILROAD SPIKE AT THE ROAD SURFACE  
DATE
- ☒ left monument as found, ☐ lowered monument, ☐ removed monument (explain)
- ☐ On \_\_\_\_\_ placed a \_\_\_\_\_  
DATE

SKETCH OF REFERENCE TIES



Statement of evidence relative to this corner location is on back of page.

I hereby certify that this document and the data contained herein was prepared by me or under my direct supervision.

Robert J. Jans 7-22-92  
SIGNATURE DATE  
Registration No. 11864  
☒ Land Surveyor, ☐ Professional Engineer  
☐ County Surveyor, ☐ County Engineer

OFFICE OF THE COUNTY RECORDER

County of McLeod

I hereby certify that this document was filed in the Co. Recorders office at 9 A. .M. on the 29th day of July A.D., 1992  
County Recorder Armen Estlie  
By \_\_\_\_\_, Deputy  
DOCUMENT NO. 246770

- 1856 - The original Public Land Survey was completed by A. H. Runyon. A wood post was set to mark the corner with reference made to four bearing trees.
- 1898 - E. L. Higgins, McLeod County Surveyor, found an iron stake at the corner.
- 1903 - E. L. Higgins recovered the iron stake and measured a distance of 2628 ft. to the north quarter corner of Section 33.
- 1967 - Lew Merrill, former McLeod County Surveyor, stated that there had been an iron stake at the corner but he thought it may have been destroyed during road construction.
- 1972 - Dickman Knutson, McLeod County Surveyor, dug for the corner and found a 3" by 4" by 12" stone standing on end about 1.5 ft. below the road surface. An iron pipe was set above the stone to mark the corner and reference ties were made. The distance to the north quarter corner of Section 33 was measured to be 2625.09 ft.
- 1980 - Willard Pellinen, McLeod County Surveyor, found the iron pipe and replaced it with a cast iron monument. New reference ties were made. It was located at the intersection of centerlines of roads east, west, and north.
- 1987 - Willard Pellinen set a railroad spike at the road surface and over the cast iron monument, using the reference ties.
- 1989 - Willard Pellinen recovered the railroad spike and the ties all in good condition.
- 1991 - A Mn/DOT survey crew (Gene East, crew chief) found the railroad spike at the road surface. It was located at the intersection of centerlines of roads east, west, and north.

The railroad spike over the cast iron monument is accepted as the corner location because it appears that the position of the iron found in 1898 has been perpetuated over the years, it nearly fits old survey distances to the north quarter corner, and it fits long standing occupation lines.

For additional information, contact the Mn/DOT Surveys Section at Willmar, Mn 56201.

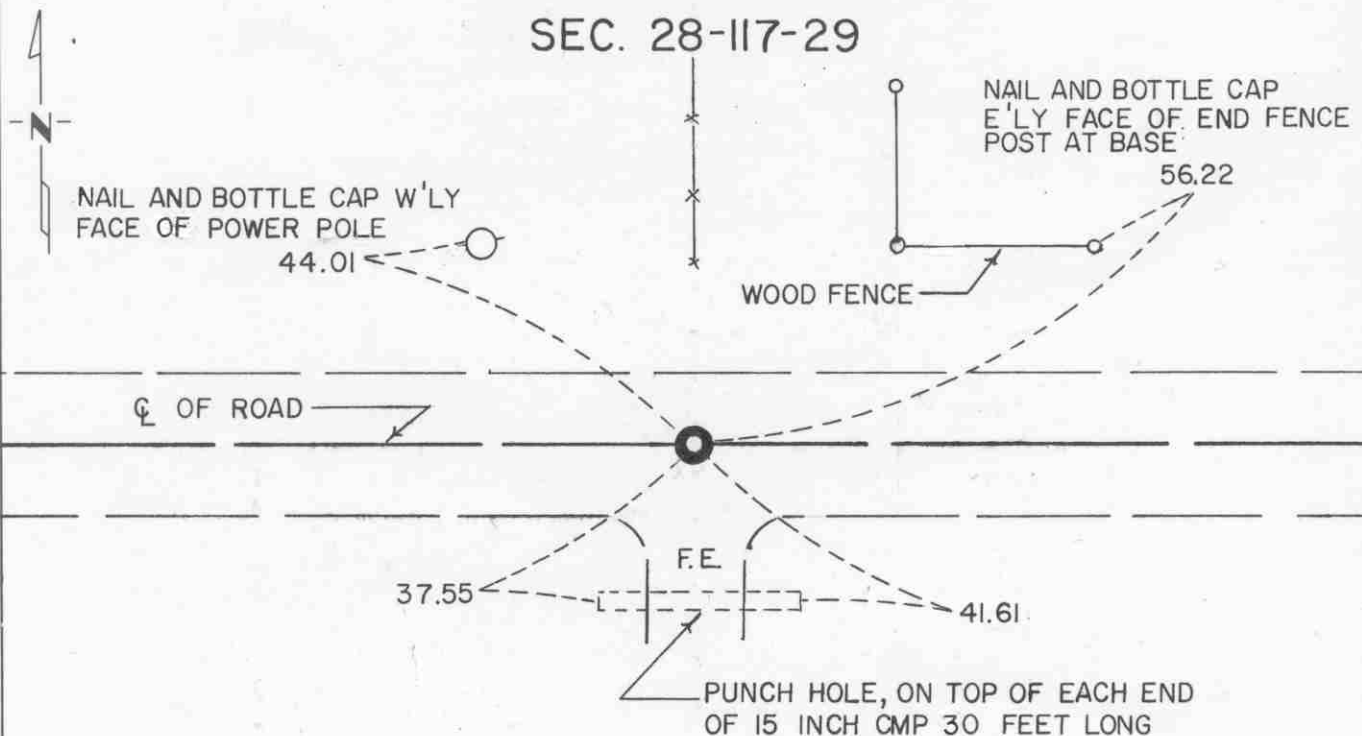
**CERTIFICATE OF LOCATION OF GOVERNMENT CORNER**

NORTH QUARTER Corner of Section 33, Township 117N, Range 29 W, 5<sup>th</sup> P.M.  
 STATE OF MINNESOTA, County of MC LEOD

At the corner location shown on the sketch:

- ☒ On FEB. 1991 found a RAILROAD SPIKE AT THE ROAD SURFACE  
DATE
- ☒ left monument as found, ☐ lowered monument, ☐ removed monument (explain)
- ☐ On \_\_\_\_\_ placed a \_\_\_\_\_  
DATE

## SKETCH OF REFERENCE TIES

**SEC. 28-117-29****SEC. 33-117-29**

Statement of evidence relative to this corner location is on back of page.

I hereby certify that this document and the data contained herein was prepared by me or under my direct supervision.

Robert Jones 7-22-92  
SIGNATURE DATE

Registration No. 11864

- ☒ Land Surveyor, ☐ Professional Engineer  
☐ County Surveyor, ☐ County Engineer

OFFICE OF THE COUNTY RECORDER

County of McLeod

I hereby certify that this document was filed in the Co. Recorders office at 9 A. M. on the 29<sup>th</sup> day of July A.D. 1992

County Recorder Farmer Ostlie

By \_\_\_\_\_, Deputy

DOCUMENT NO. 246773

- 1856 - The original Public Land Survey was completed by A. H. Runyon. A wood post was set to mark the corner with reference to one bearing tree.
- 1930 - E. L. Higgins, McLeod County Surveyor, found an iron stake at the corner. He measured 2628 ft. to the northeast corner of the section.
- 1967 - Lew Merrill, former McLeod County Surveyor, stated that there was an iron stake at the corner which both Higgins and himself had used.
- 1972 - Dickman Knutson, McLeod County Surveyor, found an iron stake at the centerline of an east/west road and in line with a north/south fence to the north. He replaced the iron stake with a McLeod County cast iron monument.
- 1976 - Dickman Knutson measured the distance along the north line of the section and found that it was 2625.09 ft. to the northeast corner of the section and 2621.74 ft. to the northwest corner of the section.
- 1983 - Willard Pellinen, McLeod County Surveyor, set a new cast iron monument according to Knutson's survey and made new reference ties. The old monument had been destroyed by road construction.
- 1987 - Willard Pellinen set a railroad spike at the road surface over the cast iron monument using the 1983 reference ties.
- 1989 - Willard Pellinen recovered the railroad spike and the reference ties in good condition.
- 1991 - A Mn/DOT survey crew (Gene East, crew chief) found the railroad spike at the road surface. It was located at the centerline of an east/west road and in line with a fence to the north.

The railroad spike over the cast iron monument is accepted as the corner location because they perpetuate the position of the iron found in 1930, it nearly fits old survey distances to the section corners on either side, it fits long standing occupation lines, and it is 1.71 ft. west and 2.79 ft. north of the lost location.

For additional information, contact the Mn/DOT Surveys Section at Willmar, Mn 56201.

# CERTIFICATE OF LOCATION OF GOVERNMENT CORNER

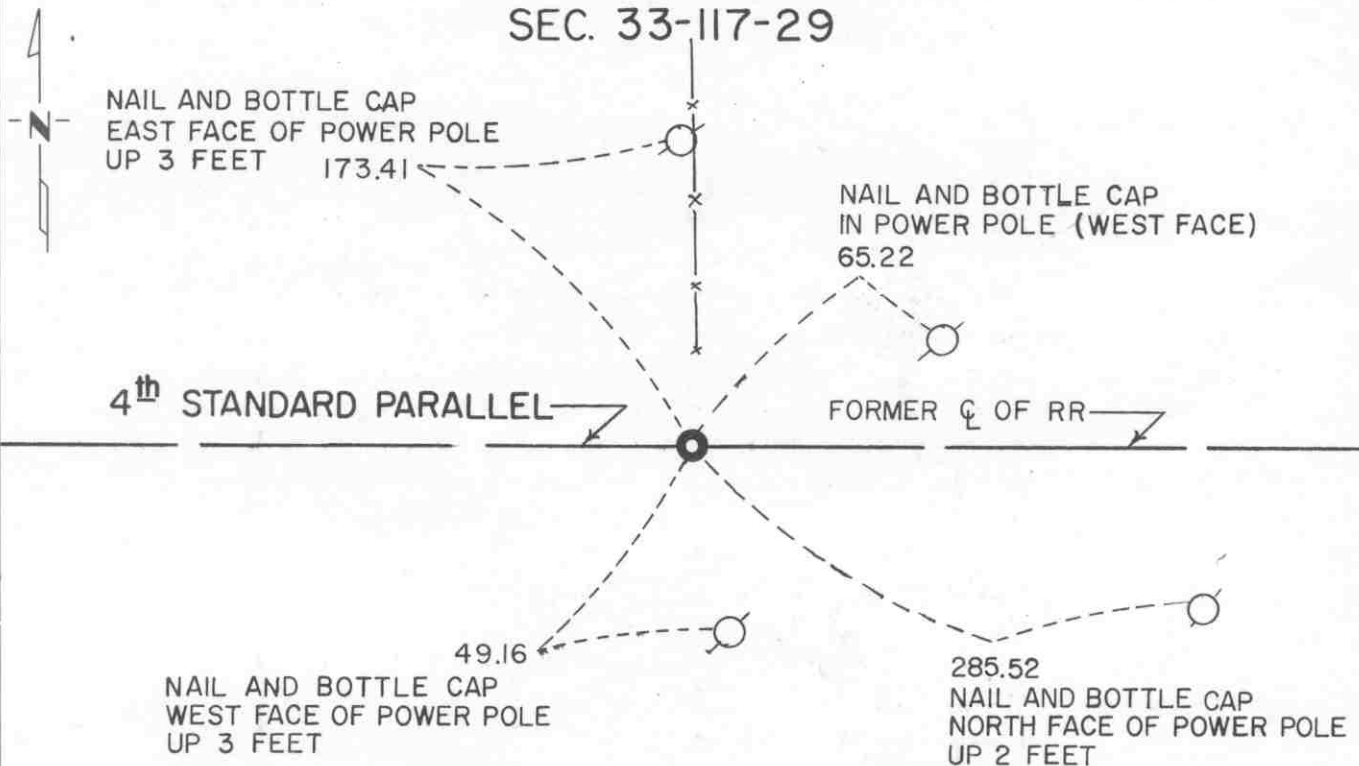
SOUTH QUARTER Corner of Section 33, Township 117 N, Range 29 W, 5<sup>th</sup> P.M.  
STATE OF MINNESOTA, County of MCLEOD

At the corner location shown on the sketch:

- ☒ On FEB. 1991 found a CAST IRON MONUMENT ABOUT 2" BELOW  
THE GROUND SURFACE  
☒ left monument as found, ☐ lowered monument, ☐ removed monument (explain)
- ☐ On \_\_\_\_\_ placed a \_\_\_\_\_  
DATE

## SKETCH OF REFERENCE TIES

### SEC. 33-117-29



### SEC. 4-116-29

Statement of evidence relative to this corner location is on back of page.

I hereby certify that this document and the data contained herein was prepared by me or under my direct supervision.

Robert C. Gaus 7-22-92  
SIGNATURE DATE

Registration No. 11864

- ☒ Land Surveyor, ☐ Professional Engineer  
☐ County Surveyor, ☐ County Engineer

## OFFICE OF THE COUNTY RECORDER

County of McLeod

I hereby certify that this document was filed in the Co. Recorders office at 9 A. .M. on the 29<sup>th</sup> day of July A.D., 1992

County Recorder Armen Ostlie

By \_\_\_\_\_, Deputy

DOCUMENT NO. 246774

- 1855 - The original Public Land Survey was completed by John Ryan. A wood post was set over a deposit of charcoal in a dirt mound. A pit was dug 8 links east.
  
- 1937 - The Minnesota Highway Department right of way map depicts the corner to be about 1330 ft. southerly of T.H. 7 P.O.T. 109+60. No mention is made of the type of monument that may have been found. It appears to have been located at or near the centerline of the Minnesota Western Railroad, now abandoned.
  
- 1967 - Lew Merrill, former McLeod County Surveyor, stated that there was an iron pin at the corner on the centerline of the railroad and that it is in line with a fence to the north.
  
- 1968 - Dickman Knutson, McLeod County Surveyor, found an iron pin at the centerline of the tracks and in line with a fence to the north.
  
- 1969 - Dickman Knutson replaced the iron pin with a cast iron monument and took reference ties.
  
- 1983 - Willard Pellinen, McLeod County Surveyor, found that the top of the cast iron monument was broken but the bottom was still undisturbed. A new cast iron monument was set and new reference ties taken. The railroad tracks had been removed.
  
- 1989 - Willard Pellinen recovered the cast iron monument and the reference ties.
  
- 1991 - A Mn/DOT survey crew (Gene East, crew chief) found the cast iron monument about 2" below the surface. It was located at the centerline of the old railroad grade, now the Luce Line State Recreational Trail, and in line with a fence to the north.

The cast iron monument is accepted as the corner location because it fits long standing occupation lines and it perpetuates the location of a monument that had probably marked the corner for at least 60 years. It is located 1324.02 ft. southerly of T.H. 7 P.O.T. 108+69.03, which indicates that whoever drafted the location on the right of way map did so without benefit of any field information. It is 23.95 ft. west and 5.08 ft. north of the lost location.

For additional information, contact the Mn/DOT Surveys Section at Willmar, Mn 56201.



# CERTIFICATE OF LOCATION OF GOVERNMENT CORNER

SOUTHEAST Corner of Section 33, Township 117 N, Range 29 W, 5<sup>th</sup> P.M.  
 STATE OF MINNESOTA, County of MCLEOD

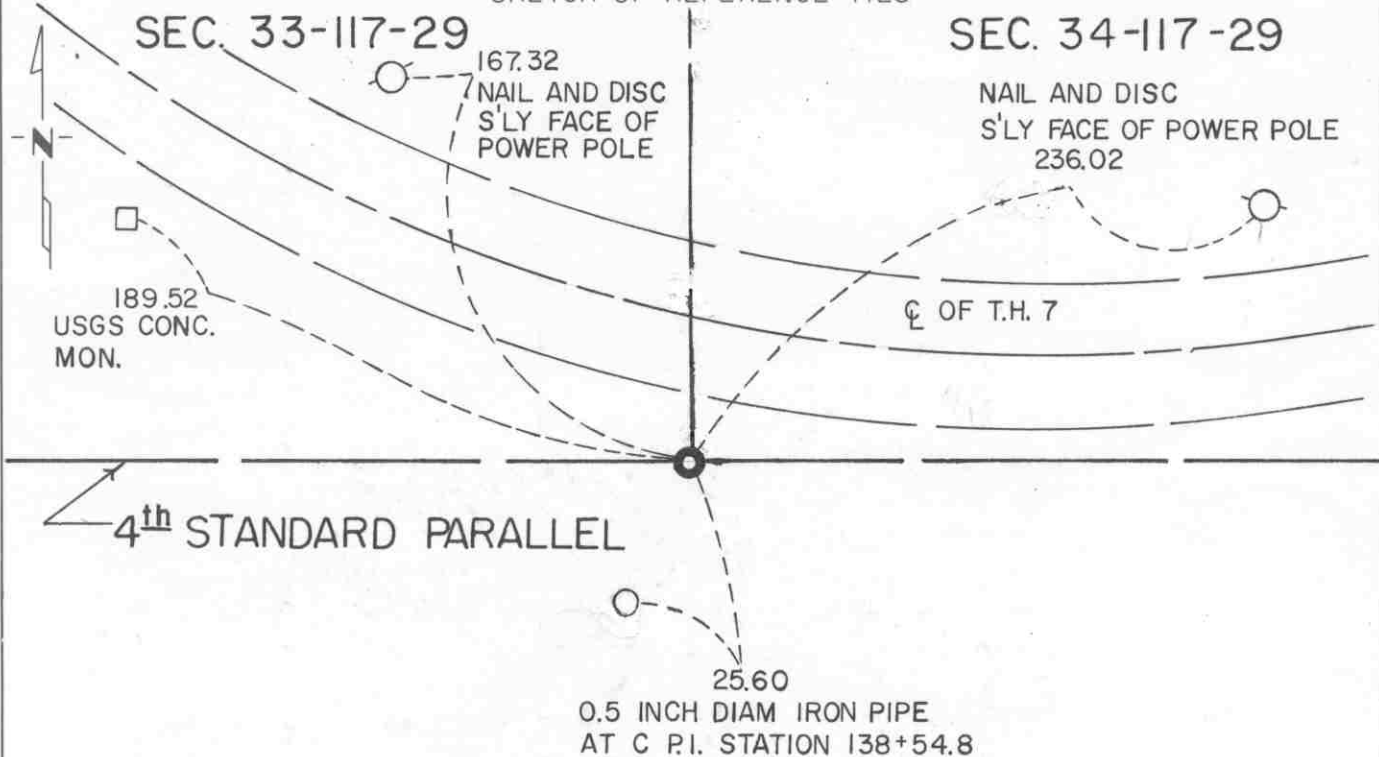
At the corner location shown on the sketch:

☒ On FEB. 1991 found a CAST IRON MONUMENT ABOUT 2" BELOW  
DATE THE GROUND SURFACE

☒ left monument as found, ☐ lowered monument, ☐ removed monument (explain)

☐ On \_\_\_\_\_ placed a \_\_\_\_\_  
DATE

SKETCH OF REFERENCE TIES



Statement of evidence relative to this corner location is on back of page.

I hereby certify that this document and the data contained herein was prepared by me or under my direct supervision.

Robert C. Jones 7-22-92  
SIGNATURE DATE

Registration No. 11864

☒ Land Surveyor, ☐ Professional Engineer

☐ County Surveyor, ☐ County Engineer

OFFICE OF THE COUNTY RECORDER

County of McLeod

I hereby certify that this document was filed in the Co. Recorders office at 9 A. .M. on the 29<sup>th</sup> day of July A.D., 1992

County Recorder Harmon Estlie

By \_\_\_\_\_, Deputy

DOCUMENT NO. 246772



- 1855 - The original Public Land Survey of the Fourth Standard Parallel was completed by John Ryan. A wood post was set over a deposit of charcoal in a dirt mound to mark the corner. A trench and pits were dug to build the mound. Osage orange was planted at the corners of the mound.
- 1937 - The Minnesota Highway Department right of way map shows that a stone monument was found on the semi-tangent of the centerline curve on T.H. 7. It was at a P.O.S.T. 101.2 ft. ahead of P.I. 138+54.8. It appears to have been at the centerline of an old east/west road which has since been obliterated.
- 1977 - Dickman Knutson, McLeod County Surveyor, re-established the corner position and set a 1/2" diameter pipe to mark the corner. The corner was set a distance of 5324 feet west of the southeast corner of Section 34 as shown in the old county surveyor book on the survey for Section 3, T 116 N, R 29 W. The result of setting the section corner at this location was that the south quarter corner of Section 34 was within 3 feet of being midway between the section corners. This location also fit a fence line 1/4 mile east that is considered to be along the east line of the Southwest 1/4 of the Southwest 1/4 of Section 34. The closing distance to the northwest corner of Section 3, T 116 N, R 29 W is within 2.5 ft. of the PLS distance. The state highway right of way map showed the corner to be about 75 ft. east of this location.
- 1979 - Willard Pellinen, McLeod County Surveyor, replaced the iron pipe with a McLeod County cast iron monument and set reference ties.
- 1989 - Willard Pellinen recovered the cast iron monument and set additional reference ties.
- 1991 - A Mn/DOT survey crew (Gene East, crew chief) found the cast iron monument about 2" below ground.

The cast iron monument is accepted as the corner location because it fits old county and government survey distances quite well, it fits a long standing occupation line, and has probably been used in a number of property surveys since it was re-established. The Minnesota Highway Department right of way map appears to have been in error in one of two ways. Either the found stone was not the section corner or the distance to the P.I. was measured incorrectly. The cast iron monument is located at a P.O.S.T. 25.56 ft. ahead of T.H. 7 P.I. 138+54.80.

For additional information, contact the Mn/DOT Surveys Section at Willmar, Mn 56201.

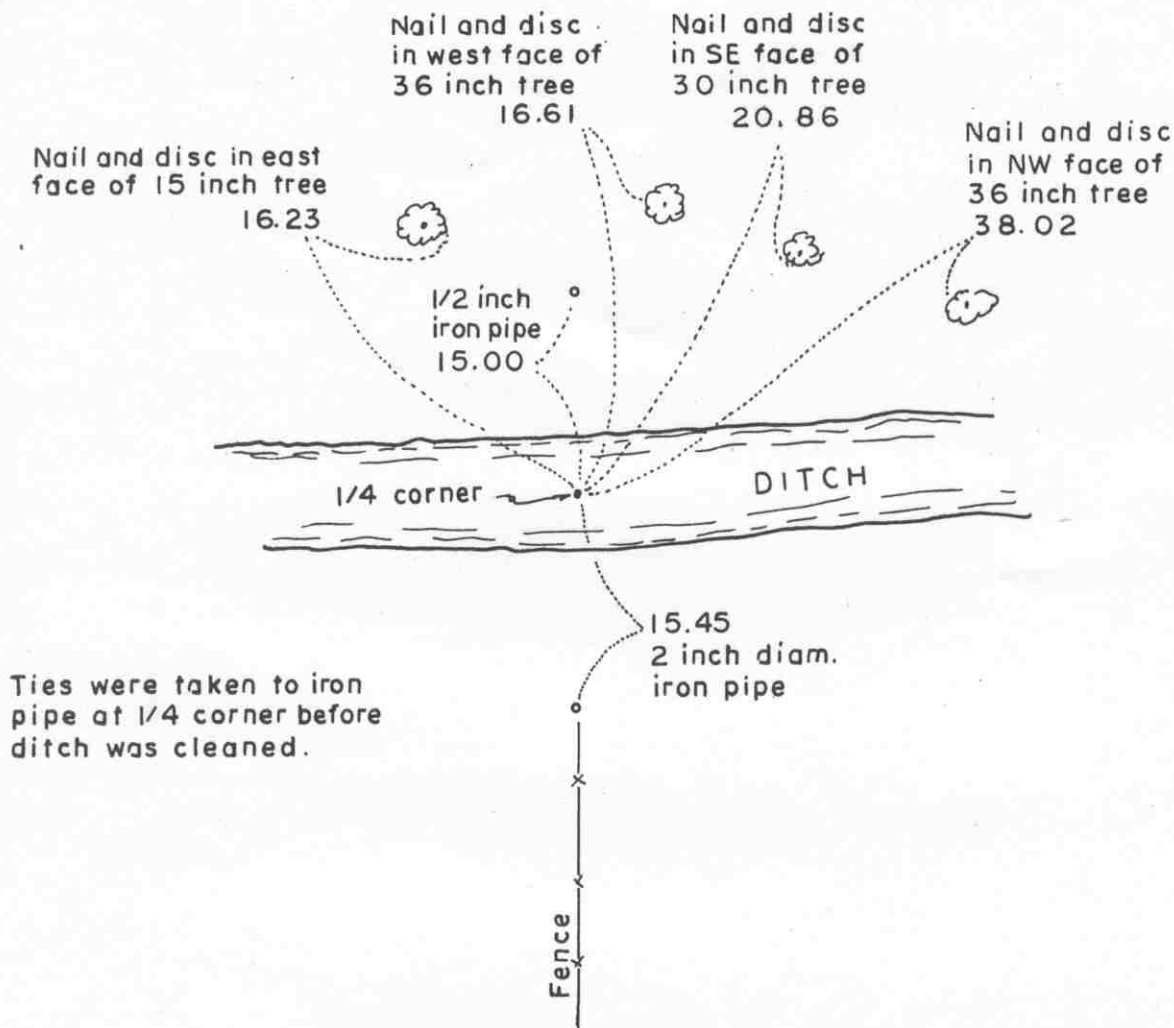
EAST QUARTER corner, Section 34, Township 117 North, Range 29 West

# Certificate of Location of Government Corner

## SKETCH OF REFERENCE TIES (NO SCALE)

SECTION 34

SECTION 35



Statement of evidence relative to this corner location on sheet 2

I hereby certify that this document was prepared by me or under my direct supervision.

Willard Pellinen

Willard Pellinen  
McLeod County Surveyor  
License No. 9626

Date Feb. 2, 1995

OFFICE OF THE COUNTY RECORDER  
MCLEOD COUNTY, MINNESOTA.

I hereby certify that this document was filed in this office at 9 o'clock A.M. on the 6th day of February, 1995.

Carmen Ottilie Mulder County Recorder

By \_\_\_\_\_, Deputy

Document No. 264048

EAST QUARTER corner, Section 34, Township 117 North, Range 29 West

## *Certificate of Location of Government Corner*

May, 1856. This corner was originally established by the General Land Office. A.H.Runyon set a post as a witness corner to the quarter corner 12 chains (792 feet) south of the quarter corner. Quarter corner fell in a swamp.

November, 1965. Roy Hansen, surveyor, set the corner in the center of the east-west ditch as per testimony by Mr. Louis Ruzicka, who lived in the Northwest Quarter of Section 35.

April, 1968. McCombs Knutson Associates (Dickman Knutson, county surveyor) used the same point for the quarter corner as Hansen. Knutson left a 1 inch diameter iron pipe near the fence along the south side of the ditch, planning to come back later and set it at the corner. At this time there was too much water in the ditch to set the corner.

September, 1968. Knutson found someone had pounded the iron pipe flush with the ground, south of the ditch at the fence intersection. (fences south and east). Mr. Ruzicka again testified that the center of the ditch is the quarter corner. Mr. Dostal, in the Southwest Quarter of Section 35, agrees with Mr. Ruzicka. Book 42 of Deeds Page 510 in the County Recorders office shows the corner to be 72 feet more or less south of the center line of the railroad. Knutson measured 72 feet to the corner from the railroad center line.

November 1973. Knutson set a 1 3/4 inch iron pipe at the corner and took reference ties.

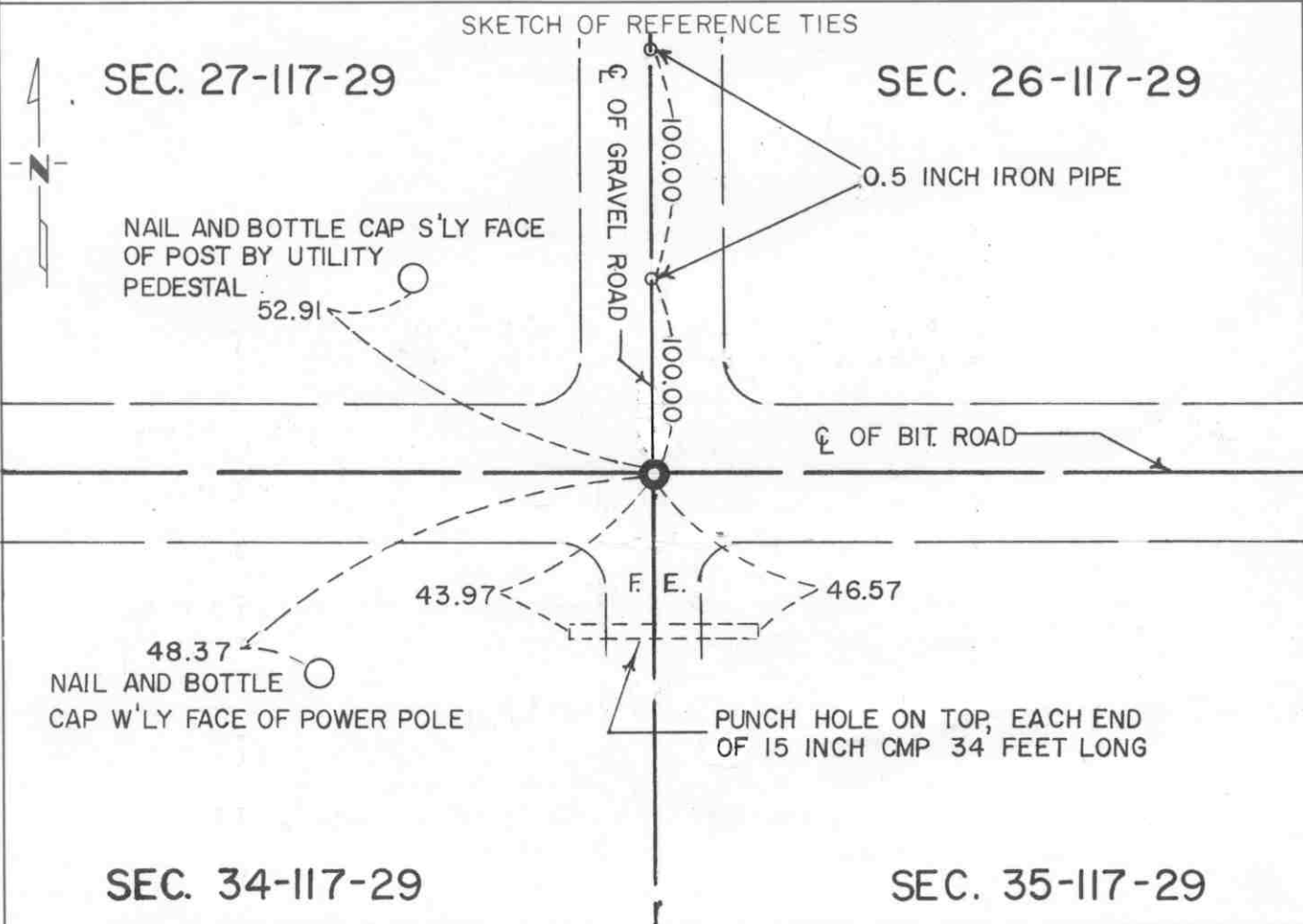
April 18, 1980. Mr. William Janousek, 71 years old and had lived in the East Half of the Southeast Quarter of Section 34 all his life, said the corner is in the center of the ditch. He said when he was 5 years old he went out with his father when his father built the fence along the south side of the ditch and his father told him the ditch was on the property line. We found the iron pipe set by Knutson had been removed by ditch cleaning.

# CERTIFICATE OF LOCATION OF GOVERNMENT CORNER

NORTHEAST Corner of Section 34, Township 117 N, Range 29 W, 5<sup>th</sup> P.M.  
 STATE OF MINNESOTA, County of MCLEOD

At the corner location shown on the sketch:

- ☒ On FEB. 1991 found a RAILROAD SPIKE AT THE ROAD SURFACE  
DATE
- ☒ left monument as found, ☐ lowered monument, ☐ removed monument (explain)
- ☐ On \_\_\_\_\_ placed a \_\_\_\_\_  
DATE



Statement of evidence relative to this corner location is on back of page.

I hereby certify that this document and the data contained herein was prepared by me or under my direct supervision.

Robert C. Jones 7-22-92  
SIGNATURE DATE

Registration No. 11864

- ☒ Land Surveyor, ☐ Professional Engineer  
☐ County Surveyor, ☐ County Engineer

OFFICE OF THE COUNTY RECORDER

County of McLeod

I hereby certify that this document was filed in the Co. Recorders office at 9 A. M. on the 29<sup>th</sup> day of July A.D., 1992

County Recorder Norman Ostlie

By \_\_\_\_\_, Deputy

DOCUMENT NO. 246775

- 1856 - The original Public Land Survey was completed by A. H. Runyon. A wood post was set to mark the corner with reference to three bearing trees.
- 1898 - E. L. Higgins, McLeod County Surveyor, surveyed the road between Sections 26 and 27. He found evidence of an old post and set a new post to mark the corner. His distance to the northwest corner of Section 34 was 5267.5 ft., it was 2630 ft. to the east quarter corner of Section 27, and 2610 ft. to the north quarter corner of Section 35.
- 1926 - Carlisle Madson, Sr., McLeod County Surveyor, found a 5" (diameter/square?) oak post that was set by Higgins in 1898.
- 1965 - Roy Hansen, surveyor, found a 1/2" diameter re-rod at the corner.
- 1967 - Lew Merrill, former McLeod County Surveyor, stated that he had set a re-rod in place of an old post to mark the corner.
- 1968 - Dickman Knutson, McLeod County Surveyor, found the re-rod and replaced it with a McLeod County cast iron monument to mark the corner. He measured the distance to the northwest corner of the section at 5267.0 ft.
- 1983 - Willard Pellinen, McLeod County Surveyor, found the bottom of the cast iron monument undisturbed according to the reference ties. The bottom of the broken monument was removed and replaced with a new cast iron monument with a 1/2" diameter by 14" long iron pipe under it. New reference ties were set. It was located at the intersection of centerlines of roads east, west, and north.
- 1987 - Willard Pellinen set a railroad spike at the road surface over the cast iron monument by using the reference ties.
- 1989 - Willard Pellinen found the railroad spike and the ties.
- 1991 - A Mn/DOT survey crew (Gene East, crew chief) found the railroad spike at the road surface. It was located at the centerlines of roads east, west, and north.

The railroad spike over the cast iron monument is accepted as the corner location because there is a continuous chain of record evidence perpetuating the original corner location.

For additional information, contact the Mn/DOT Surveys Section in Willmar, Mn 56201.

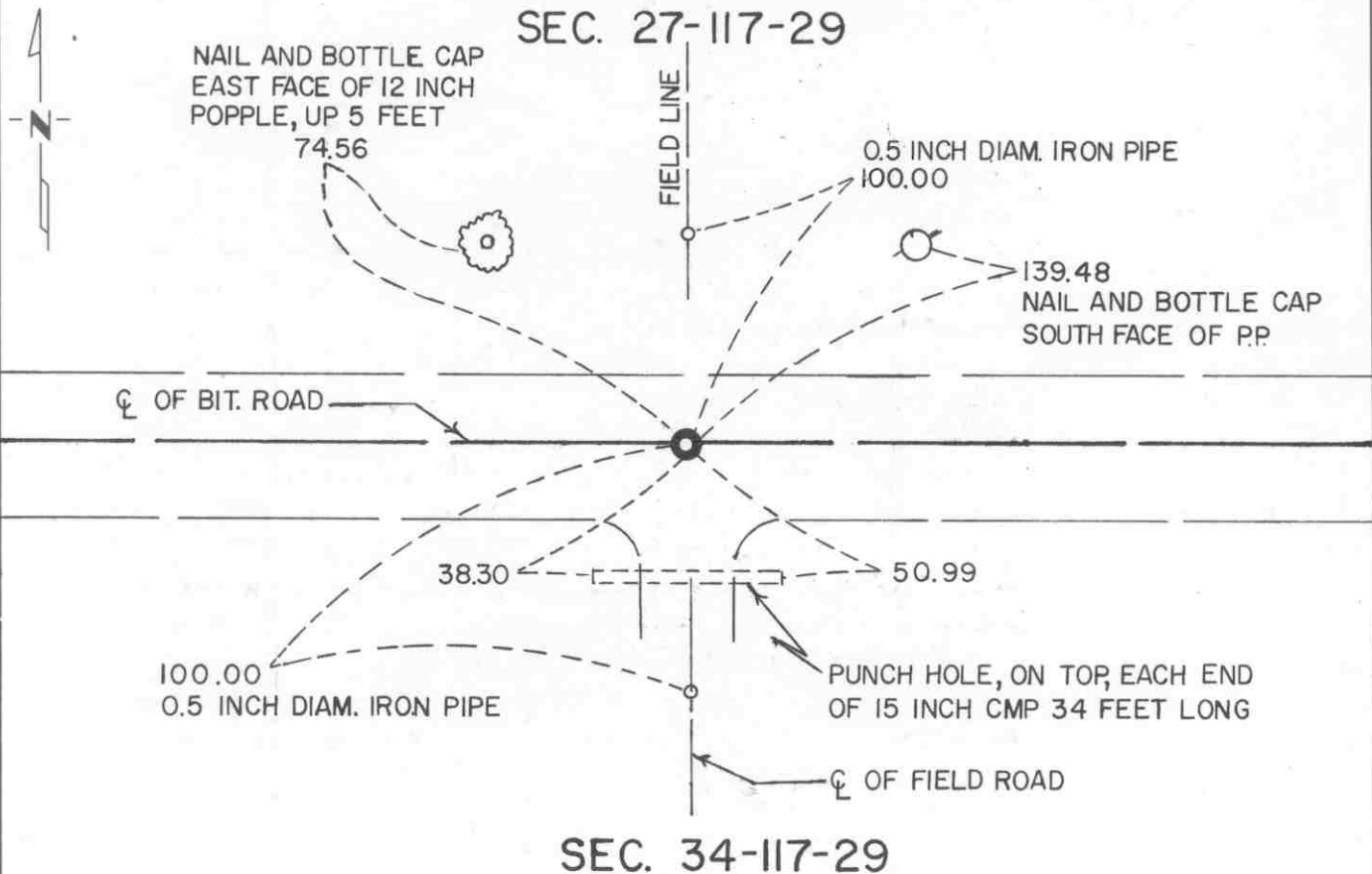
# CERTIFICATE OF LOCATION OF GOVERNMENT CORNER

NORTH QUARTER Corner of Section 34, Township 117 N, Range 29 W, 5<sup>th</sup> P.M.  
 STATE OF MINNESOTA, County of MCLEOD

At the corner location shown on the sketch:

- ☒ On FEB. 1991 found a RAILROAD SPIKE AT THE ROAD SURFACE  
DATE
- ☒ left monument as found, ☐ lowered monument, ☐ removed monument (explain)
- ☐ On \_\_\_\_\_ placed a \_\_\_\_\_  
DATE

## SKETCH OF REFERENCE TIES



Statement of evidence relative to this corner location is on back of page.

I hereby certify that this document and the data contained herein was prepared by me or under my direct supervision.

Robert C. Jones 7-22-92  
SIGNATURE DATE

Registration No. 11864

☒ Land Surveyor, ☐ Professional Engineer  
☐ County Surveyor, ☐ County Engineer

OFFICE OF THE COUNTY RECORDER  
 County of McLeod

I hereby certify that this document was filed in the Co. Recorders office at 9 A. .M. on the 29th day of July A.D. 1992

County Recorder Armen Ostlie  
 By \_\_\_\_\_, Deputy  
 DOCUMENT NO. 246778



- 1856 - The original Public Land Survey was completed by A. H. Runyon. A wood post was set to mark the corner with reference to one bearing tree.
- 1965 - Roy Hansen, surveyor, found a 1/2" diameter iron rod at the corner.
- 1968 - Dickman Knutson, McLeod County Surveyor, found the 1/2" diameter iron rod and used it as the quarter corner location for a survey in Section 34.
- 1980 - Willard Pellinen, McLeod County Surveyor, found the iron rod and replaced it with a McLeod County cast iron monument and set reference ties. It was located at the centerline of an east/west road, in line with a field division to the north, and in line with the centerline of a field road to the south.
- 1987 - Willard Pellinen set a railroad spike at the road surface over the cast iron monument using the reference ties.
- 1989 - Willard Pellinen found the railroad spike and the ties.
- 1991 - A Mn/DOT survey crew (Gene East, crew chief) found the railroad spike at the road surface. It was located at the centerline of an east/west road, in line with a field division to the north, and in line with a field road to the south.

The railroad spike over the cast iron monument is accepted as the corner location because it has been used in at least one property survey, it fits long standing occupation lines, and it appears that the iron rod is of the type that may have been set by Lew Merrill, former county surveyor, from evidence that he found in the 1930s. The spike is 11.69 ft. east and 2.12 ft. north of the lost location.

For additional information, contact the Mn/DOT Surveys Section at Willmar, Mn 56201.

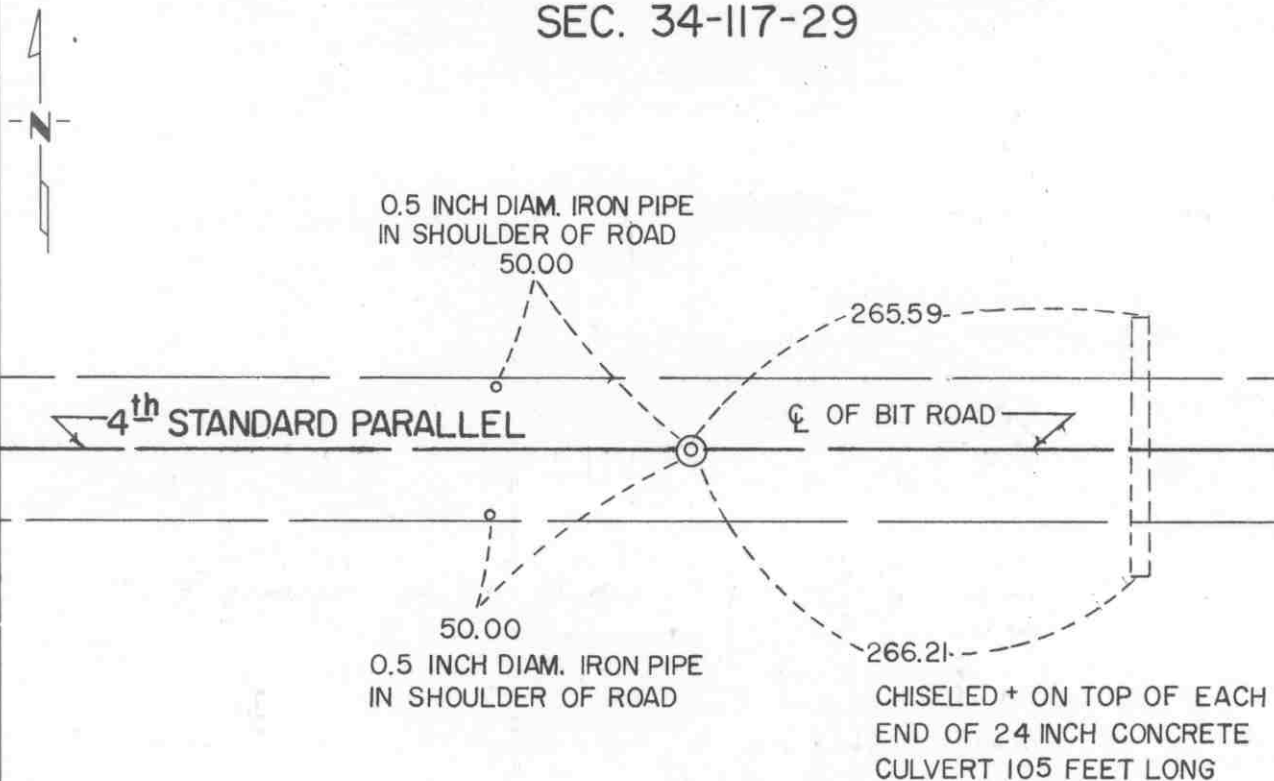
# CERTIFICATE OF LOCATION OF GOVERNMENT CORNER

SOUTH QUARTER Corner of Section 34, Township 117N, Range 29W, 5<sup>th</sup> P.M.  
STATE OF MINNESOTA, County of MCLEOD

At the corner location shown on the sketch:

- ☒ On FEB. 1991 found a RAILROAD SPIKE ABOUT 1" BELOW  
DATE THE ROAD SURFACE
- ☒ left monument as found, ☐ lowered monument, ☐ removed monument (explain)
- ☐ On \_\_\_\_\_ placed a \_\_\_\_\_  
DATE \_\_\_\_\_

## SKETCH OF REFERENCE TIES SEC. 34-117-29



## SEC. 3-116-29

Statement of evidence relative to this corner location is on back of page.

I hereby certify that this document and the data contained herein was prepared by me or under my direct supervision.

Robert Jones  
SIGNATURE  
Registration No. 11864  
7-22-92  
DATE  
☒ Land Surveyor, ☐ Professional Engineer  
☐ County Surveyor, ☐ County Engineer

### OFFICE OF THE COUNTY RECORDER

County of McLeod

I hereby certify that this document was filed in the Co. Records office at 9 A. .M. on the 29th day of July A.D., 1992

County Recorder Harmon Estlie

By \_\_\_\_\_, Deputy

DOCUMENT NO. 246779



- 1855 - The original Public Land Survey of the Fourth Standard Parallel was completed by John Ryan. A wood post was set above a deposit of charcoal in a dirt mound to mark the corner. A trench and pits were dug to build the mound. Osage orange was planted at the corners of the mound.
- 1937 - The Minnesota Highway Department right of way map depicts this corner to be about at T.H. 7 P.O.T. 165+65 as scaled on the map. It was at or near the centerline of an old east/west road.
- 1965 - Roy Hansen, surveyor, found a railroad spike at the surface of T.H. 7 at the centerline of the highway.
- 1968 - Dickman Knutson, McLeod County Surveyor, found the railroad spike and used it as the quarter corner for a survey in Section 34.
- 1970 - Dickman Knutson checked the field division line near the center of Section 34 and found it to be within 7 ft. of being on the north/south quarter line.
- 1983 - Willard Pellinen, McLeod County Surveyor, reset a railroad spike at the corner from the old reference ties.
- 1989 - Willard Pellinen recovered the railroad spike and reference ties.
- 1991 - A Mn/DOT survey crew (Gene East, crew chief) found the railroad spike about 1" below the road surface. It is located 0.19 ft. south of T.H. 7 P.O.T. 165+14.19.

The railroad spike is accepted as the corner location because it has been used as the corner for a number of surveys over the past 26 years or so and it is 5.96 ft. west and 0.57 ft. north of the lost location. It is apparent that the right of way map location was drafted on without benefit of any direct field information.

For additional information, contact the Mn/DOT Surveys Section at Willmar, Mn 56201.

SOUTHEAST Corner of Section 34, Township 117 N, Range 29 W, 5<sup>th</sup> P.M.  
STATE OF MINNESOTA, County of MCLEOD

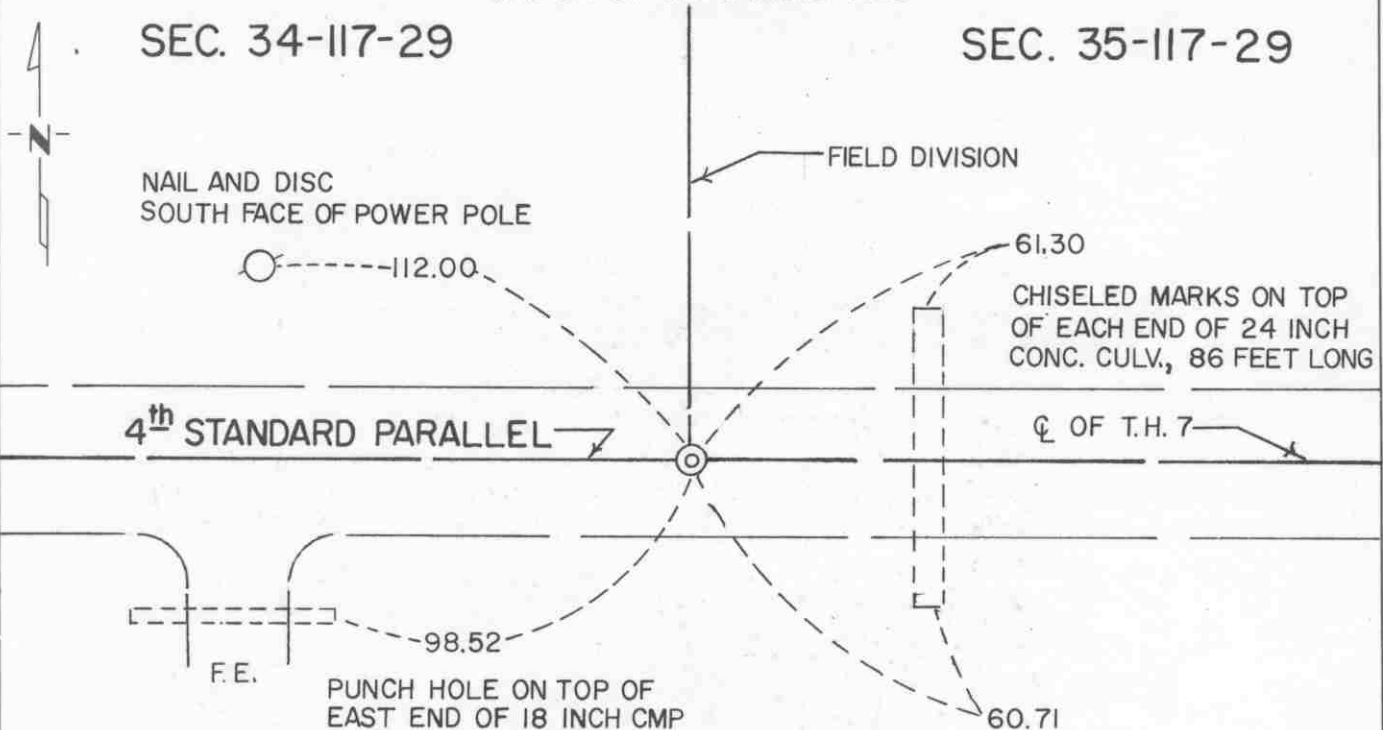
At the corner location shown on the sketch:

☒ On FEB: 1991 found a RAILROAD SPIKE AT THE ROAD SURFACE  
DATE

☒ left monument as found, ☐ lowered monument, ☐ removed monument (explain)

☐ On \_\_\_\_\_ placed a \_\_\_\_\_  
DATE

SKETCH OF REFERENCE TIES



## SEC. 3-116-29

Statement of evidence relative to this corner location is on back of page.

I hereby certify that this document and the data contained herein was prepared by me or under my direct supervision.

Robert Jones 7-22-92  
SIGNATURE DATE

Registration No. 11864

☒ Land Surveyor, ☐ Professional Engineer☐ County Surveyor, ☐ County Engineer

OFFICE OF THE COUNTY RECORDER

County of McLeod

I hereby certify that this document was filed in  
the Co. Recorders office at 9 A. .M. on the  
29th day of July A.D. 1992

County Recorder Armen Oshie

By \_\_\_\_\_, Deputy

DOCUMENT NO. 246777

- 1855 - The original Public Land Survey of the Fourth Standard Parallel was completed by John Ryan. A wood post was set to mark the corner with reference to two bearing trees.
- 1937 - The Minnesota Highway Department right of way map shows the corner to be at or near the centerline of an old road at T.H. 7 P.O.T. 191+81.4 and in line with a fence line to the north. No mention is made of the type of monument that may have been found.
- 1968 - Dickman Knutson, McLeod County Surveyor, found a railroad spike at the centerline of T.H. 7 and in line with a fence to the north.
- 1979 - Dickman Knutson set a new railroad spike at the surface of T.H. 7 using the ties he set in 1968.
- 1989 - Willard Pellinen, McLeod County Surveyor, found the railroad spike about 1" below the road surface along with 2 old reference ties. Additional reference ties were taken. It was located at the centerline of T.H. 7 and in line with a field division to the north.
- 1991 - A Mn/DOT survey crew (Gene East, crew chief) recovered the railroad spike at the road surface. It was located 0.08 ft. south of T.H. 7 P.O.T. 191+82.29 and in line with a field division to the north.

The railroad spike is accepted as the corner location because it fits long standing occupation lines and it very nearly fits the location shown on the highway right of way map.

For additional information, contact the Mn/DOT Surveys Section at Willmar, Mn 56201.

# CERTIFICATE OF LOCATION OF GOVERNMENT CORNER

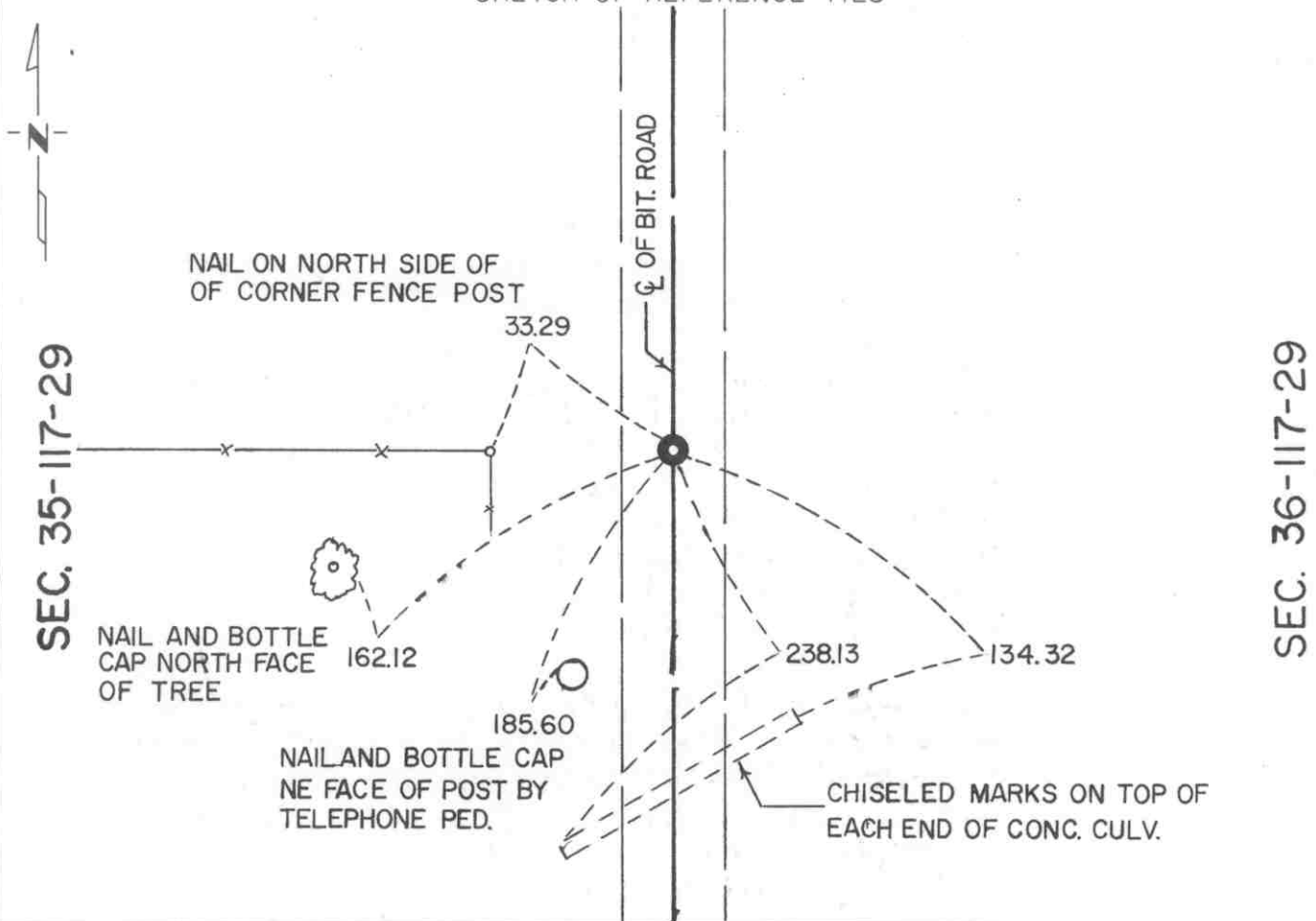
EAST QUARTER Corner of Section 35, Township 117 N, Range 29 W, 5<sup>th</sup> P.M.

STATE OF MINNESOTA, County of MCLEOD

At the corner location shown on the sketch:

- ☒ On FEB. 1991 found a P.K. NAIL AT THE ROAD SURFACE THAT FIT ALL  
THE REFERENCE TIES TO A CAST IRON MONUMENT SET IN 1973  
☒ left monument as found, ☐ lowered monument, ☐ removed monument (explain)
- ☐ On \_\_\_\_\_ placed a \_\_\_\_\_  
 DATE

SKETCH OF REFERENCE TIES



Statement of evidence relative to this corner location is on back of page.

I hereby certify that this document and the data contained herein was prepared by me or under my direct supervision.

Robert C. Jans  
 SIGNATURE

7-22-92  
 DATE

Registration No. 11864

- ☒ Land Surveyor, ☐ Professional Engineer  
☐ County Surveyor, ☐ County Engineer

OFFICE OF THE COUNTY RECORDER

County of McLeod

I hereby certify that this document was filed in the Co. Recorders office at 9 A. M. on the 29<sup>th</sup> day of July, A.D., 1992

County Recorder Armen Bilie

By \_\_\_\_\_, Deputy

DOCUMENT NO. 246781

- 1856 - The original Public Land Survey was completed by A. H. Runyon. A wood post was set to mark the corner with reference to two bearing trees.
- 1901 - E. L. Higgins, McLeod County Surveyor, found one of the bearing trees and reset the corner. There is no mention of the type of monument that was set to mark the corner.
- 1927 - McLeod County Highway survey field notes show that a stake and a stone were found at the corner.
- 1965 - Roy Hanson, surveyor, found a railroad spike at the surface of a bituminous road and used it as the quarter corner.
- 1968 - Dickman Knutson, McLeod County Surveyor, found the railroad spike and used it for surveys in Sections 35 and 36.
- 1973 - Dickman Knutson dug below the railroad spike and found an iron pin alongside a wood stake. He set a cast iron monument above the found monuments and set reference ties. This position is within 2 ft. of the County Highway Department's distance to the northeast corner and within 1.5 ft. of the distance to the southeast corner as measured in 1927.
- 1989 - Willard Pellinen, McLeod County Surveyor, recovered the cast iron monument and the reference ties in good condition. It was located at the centerline of a north/south road and in line with a fence to the west.
- 1991 - A Mn/DOT survey crew (Gene East, crew chief) found a P.K. nail at the road surface that fit all the old reference ties. It is located at the centerline of the north/south road and in line with a fence to the west.

The P.K. nail over the cast iron monument is accepted as the corner location because it apparently perpetuates the position of monuments found in 1927 and it fits long standing occupation lines. It is 13.99 ft. west and 8.78 ft. north of the lost location.

For additional information, contact the Mn/DOT Surveys Section at Willmar, Mn 56201.

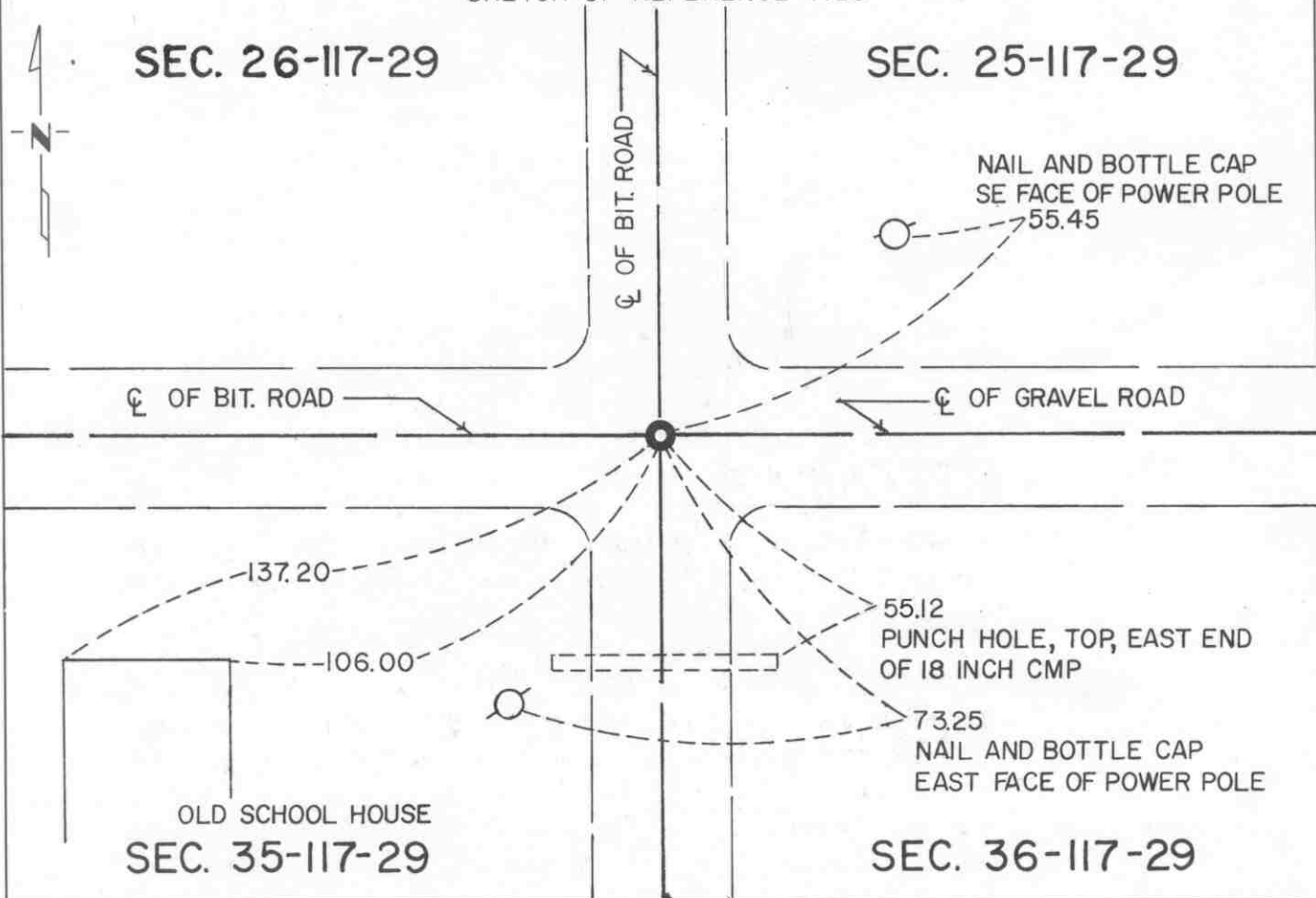
# CERTIFICATE OF LOCATION OF GOVERNMENT CORNER

NORTHEAST Corner of Section 35, Township 117 N, Range 29 W, 5<sup>th</sup> P.M.  
 STATE OF MINNESOTA, County of McLEOD

At the corner location shown on the sketch:

- ☒ On FEB. 1991 found a CAST IRON MONUMENT ABOUT 4" BELOW  
DATE THE ROAD SURFACE
- ☒ left monument as found, ☐ lowered monument, ☐ removed monument (explain)
- ☐ On \_\_\_\_\_ placed a \_\_\_\_\_  
DATE

SKETCH OF REFERENCE TIES



Statement of evidence relative to this corner location is on back of page.

I hereby certify that this document and the data contained herein was prepared by me or under my direct supervision.

Robert Jones 7-22-92  
SIGNATURE DATE

Registration No. 11864

- ☒ Land Surveyor, ☐ Professional Engineer  
☐ County Surveyor, ☐ County Engineer

OFFICE OF THE COUNTY RECORDER

County of McLeod

I hereby certify that this document was filed in the Co. Recorders office at 9 A. M. on the 29th day of July A.D., 1992

County Recorder Harmon Ostlie

By \_\_\_\_\_, Deputy

DOCUMENT NO. 246780

- 1856 - The original Public Land Survey was completed by A. H. Runyon. A wood post was set to mark the corner with reference to four bearing trees.
- 1899 - E. L. Higgins, McLeod County Surveyor, shows that there was an iron at this corner in his survey notes. He recorded distances of 2634 ft. to the north quarter corner of Section 35 and 2626.7 ft. to the east quarter corner of Section 26.
- 1920 - Old survey notes show a steel corner.
- 1936 - Old survey notes show an iron at the corner and reference ties to a school house in the northeast quarter of Section 35.
- 1968 - Dickman Knutson, McLeod County Surveyor, set the corner using the old reference ties to the old school house.
- 1973 - Dickman Knutson set a cast iron monument at the corner.
- 1979 - Willard Pellinen, McLeod County Surveyor, measured 2634.34 ft. to the north quarter corner of Section 35 and 2624.36 ft. to the east quarter corner of Section 26. Both distances compare quite favorably with the 1899 distances measured by Higgins.
- 1989 - Willard Pellinen found the cast iron monument about 6" below the road surface and found two of the reference ties. Additional reference ties were set. It was located at the centerlines of roads north, south, east, and west.
- 1991 - A Mn/DOT survey crew (Gene East, crew chief) found the cast iron monument about 5" below the road surface. It was located at the centerlines of roads north, south, east, and west.

The cast iron monument is accepted as the corner location because it apparently perpetuates the location of a monument found or set in 1899, it fits old survey distances quite well, and it fits long standing occupation lines.

For additional information, contact the Mn/DOT Surveys Section at Willmar, Mn 56201.



# CERTIFICATE OF LOCATION OF GOVERNMENT CORNER

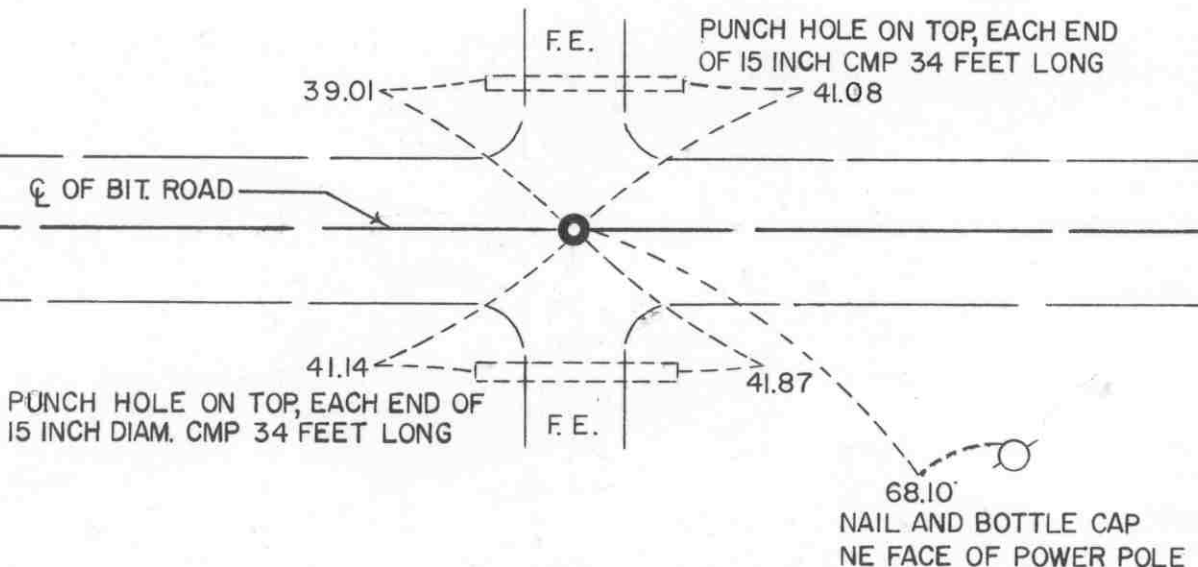
NORTH QUARTER Corner of Section 35, Township 117 N, Range 29 W, 5<sup>th</sup> P.M.  
STATE OF MINNESOTA, County of MCLEOD

At the corner location shown on the sketch:

- ☒ On FEB. 1991 found a 1/2" DIAMETER IRON PIPE AT THE ROAD SURFACE  
DATE
- ☒ left monument as found, ☐ lowered monument, ☐ removed monument (explain)
- ☐ On \_\_\_\_\_ placed a \_\_\_\_\_  
DATE

## SKETCH OF REFERENCE TIES

### SEC. 26-117-29



### SEC. 35-117-29

Statement of evidence relative to this corner location is on back of page.

I hereby certify that this document and the data contained herein was prepared by me or under my direct supervision.

Robert Jones 7-22-92  
SIGNATURE DATE  
Registration No. 11864  
☒ Land Surveyor, ☐ Professional Engineer  
☐ County Surveyor, ☐ County Engineer

## OFFICE OF THE COUNTY RECORDER

County of McLeod  
I hereby certify that this document was filed in the Co. Recorders office at 9 A. .M. on the 29th day of July A.D., 1992  
County Recorder Armin Ostlie  
By \_\_\_\_\_, Deputy  
DOCUMENT NO. 246783



Statement of Evidence:

North Quarter Corner Section 35, T 117 N, R 29 W

- 1856 - The original Public Land Survey was completed by A. H. Runyon. A wood post was set to mark the corner with reference to two bearing trees.
- 1898 - E. L. Higgins, McLeod County Surveyor, found an iron pin at the corner. He measured 2610 ft. to the northwest corner of the section and 2634 ft. to the northeast corner of the section.
- 1965 - Roy Hansen, surveyor, found a 1 1/2" diameter iron pipe at the corner.
- 1968 - Dickman Knutson, McLeod County Surveyor, found the 1 1/2" diameter iron pipe and replaced it with a McLeod County cast iron monument and set reference ties.
- 1979 - Willard Pellinen, McLeod County Surveyor, found the cast iron monument and measured 2611.69 ft. to the northwest corner of the section and 2634.34 ft. to the northeast corner of the section. Both distances compare favorably to the 1898 distances measured by Higgins. The cast iron monument was destroyed by road construction later in the year and a 1/2" diameter iron pipe was set to replace it and new reference ties were set.
- 1987 - Willard Pellinen found that the iron pipe had been destroyed by road construction. He reset an iron pipe according to his previous section survey measurements.
- 1989 - Willard Pellinen recovered the iron pipe and reference ties all in good condition. It was located at the centerline of an east/west road.
- 1991 - A Mn/DOT survey crew (Gene East, crew chief) found a 1/2" diameter iron pipe at the road surface. It was located at the centerline of and east/west road.

The iron pipe is accepted as the corner location because it appears to perpetuate the location of a monument found in 1898 and it fits the old survey distances to the section corners on either side quite well. It is located at the centerline of an east/west road and is 10.87 ft. west and 11.90 ft. south of the lost location.

For additional information, contact the Mn/DOT Surveys Section at Willmar, Mn 56201.

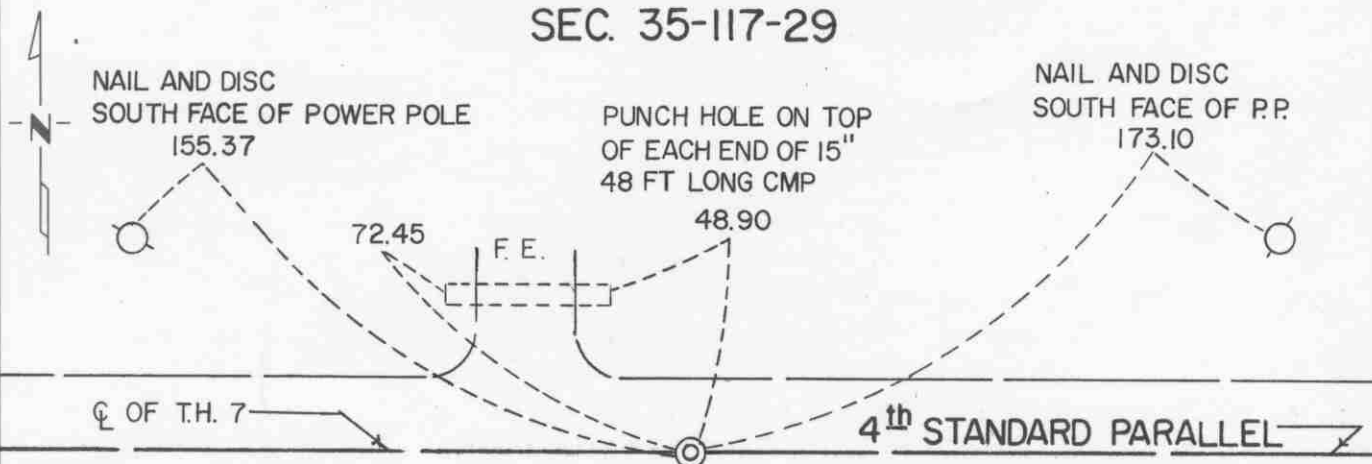
# CERTIFICATE OF LOCATION OF GOVERNMENT CORNER

SOUTH QUARTER Corner of Section 35, Township 117 N, Range 29 W, 5<sup>th</sup> P.M.  
 STATE OF MINNESOTA, County of MCLEOD

At the corner location shown on the sketch:

- ☒ On FEB. 1991 found a RAILROAD SPIKE AT THE ROAD SURFACE  
DATE
- ☒ left monument as found, ☐ lowered monument, ☐ removed monument (explain)
- ☐ On \_\_\_\_\_ placed a \_\_\_\_\_  
DATE

## SKETCH OF REFERENCE TIES SEC. 35-117-29



## SEC. 2-116-29

Statement of evidence relative to this corner location is on back of page.

I hereby certify that this document and the data contained herein was prepared by me or under my direct supervision.

Robert Jones 7-22-92  
SIGNATURE DATE

Registration No. 11864

☒ Land Surveyor, ☐ Professional Engineer  
☐ County Surveyor, ☐ County Engineer

### OFFICE OF THE COUNTY RECORDER

County of McLeod

I hereby certify that this document was filed in the Co. Recorders office at 9 A. M. on the 29th day of July A.D., 1992

County Recorder Charmen Ostlie

By \_\_\_\_\_, Deputy

DOCUMENT NO. 246784

- 1855 - The original Public Land Survey of the Fourth Standard Parallel was completed by John Ryan. A wood post was set to mark the corner with reference to two bearing trees.
- 1937 - The Minnesota Highway Department right of way map depicts the corner to be at T.H. 7 P.O.T. 218+20 as scaled on the map. It was shown to be at or near the centerline of an old east/west road.
- 1938 - All evidence of the corner was probably destroyed during the construction of T.H. 7.
- 1968 - Dickman Knutson, McLeod County Surveyor, found a railroad spike on the centerline of T.H. 7. It was located half way between the section corners. Reference ties to the spike were set.
- 1983 - Willard Pellinen, McLeod County Surveyor, found the railroad spike and set new reference ties.
- 1989 - Willard Pellinen found the railroad spike about 2" below the road surface and set new reference ties.
- 1991 - A Mn/DOT survey crew (Gene East, crew chief) found the railroad spike near the road surface. It was located 0.50 ft. north of T.H. 7 P.O.T. 218+25.11.

The railroad spike is accepted as the corner location because it nearly fits the centerline of an east/west road, which is a long standing occupation line, it closely fits the location depicted on the highway right of way map, and it is 0.07 ft. east and 3.56 ft. south of the lost location.

For additional information, contact the Mn/DOT Surveys Section at Willmar, Mn 56201.

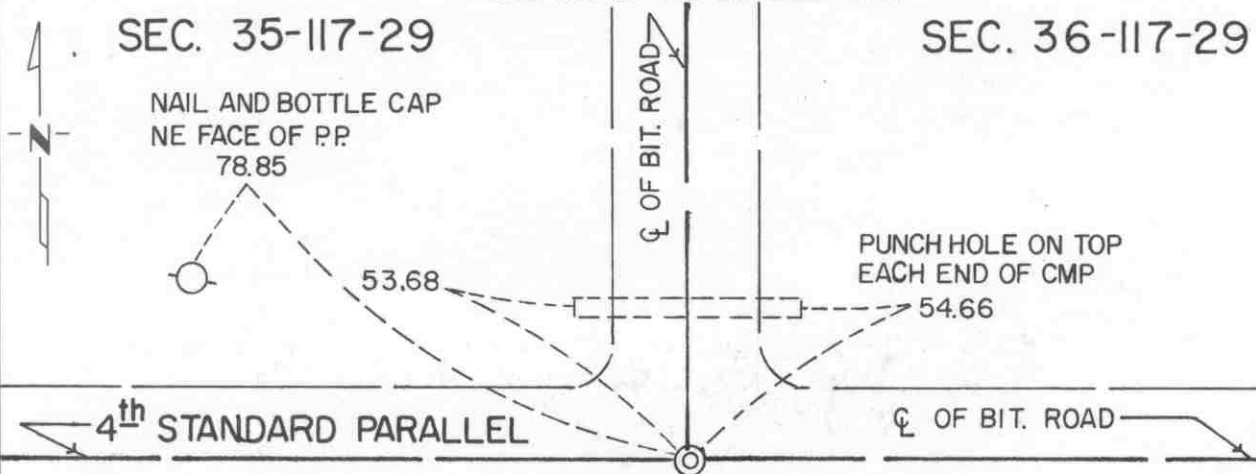
# CERTIFICATE OF LOCATION OF GOVERNMENT CORNER

SOUTHEAST Corner of Section 35, Township 117 N, Range 29 W, 5<sup>th</sup> P.M.  
 STATE OF MINNESOTA, County of MCLEOD

At the corner location shown on the sketch:

- ☒ On FEB. 1991 found a RAILROAD SPIKE AT THE ROAD SURFACE  
DATE
- ☒ left monument as found, ☐ lowered monument, ☐ removed monument (explain)
- ☐ On \_\_\_\_\_ placed a \_\_\_\_\_  
DATE

SKETCH OF REFERENCE TIES



SEC. 2-116-29

Statement of evidence relative to this corner location is on back of page.

I hereby certify that this document and the data contained herein was prepared by me or under my direct supervision.

Robert G. Gans 7-22-92  
SIGNATURE DATE

Registration No. 11864

☒ Land Surveyor, ☐ Professional Engineer  
☐ County Surveyor, ☐ County Engineer

OFFICE OF THE COUNTY RECORDER

County of McLeod

I hereby certify that this document was filed in the Co. Recorders office at 9 A. M. on the 29<sup>th</sup> day of July A.D., 1992

County Recorder Norman Ostlie

By \_\_\_\_\_, Deputy

DOCUMENT NO. 246782

- 1855 - The original Public Land Survey of the Fourth Standard Parallel was completed by John Ryan. A wood post was set to mark the corner with reference to two bearing trees.
- 1937 - The Minnesota Highway Department right of way map shows the corner to be at T.H. 7 P.O.T. 244+68.8. This was located at or near the centerline of an old east/west road and at or near the centerline of a road to the north.
- 1938 - All evidence of this corner was probably destroyed during the construction of T.H. 7.
- 1964 - Roy Hansen, surveyor, found a railroad spike at the centerline of T.H. 7 and in line with the centerline of County Highway No. 4 to the north. He used this as the section corner for a survey in Section 35.
- 1968 - Dickman Knutson, McLeod County Surveyor, found the railroad spike and used it for the section corner. He used the railroad spike for the corner in subsequent surveys in 1969, 1970, and 1971.
- 1989 - Willard Pellinen, McLeod County Surveyor, found the railroad spike and the reference ties all in good condition.
- 1991 - A Mn/DOT survey crew (Gene East, crew chief) found the railroad spike at the road surface. It is located 0.31 ft. north of T.H. 7 P.O.T. 244+67.72 and is very nearly in line with the centerline of a road to the north.

The railroad spike is accepted as the corner location because it fits long standing occupation lines, it very nearly fits the location shown on the highway right of way map, and it has been used in at least five property surveys in the area.

For additional information, contact the Mn/DOT Surveys Section at Willmar, Mn 56201.

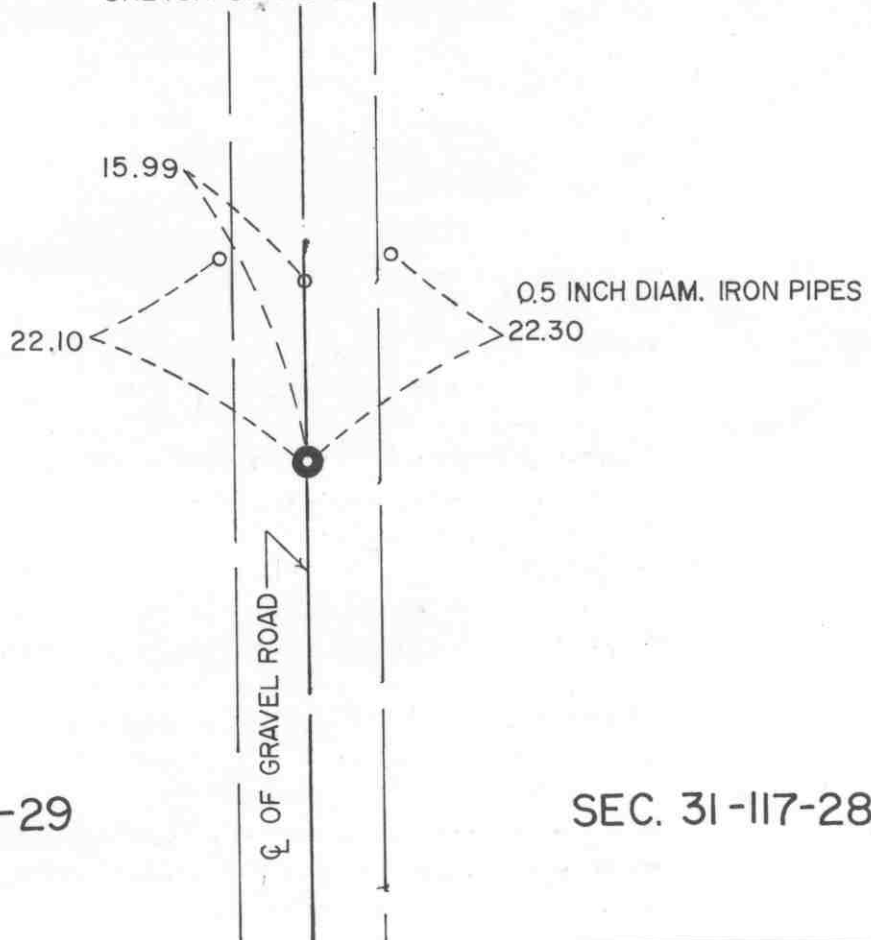
# CERTIFICATE OF LOCATION OF GOVERNMENT CORNER

EAST QUARTER Corner of Section 36, Township 117 N, Range 29 W, 5<sup>th</sup> P.M.  
 STATE OF MINNESOTA, County of MCLEOD

At the corner location shown on the sketch:

- ☒ On AUG. 6, 1991 found a CAST IRON MONUMENT ABOUT 3" BELOW  
DATE THE ROAD SURFACE
- ☒ left monument as found, ☐ lowered monument, ☐ removed monument (explain)
- ☐ On \_\_\_\_\_ placed a \_\_\_\_\_  
DATE

SKETCH OF REFERENCE TIES



SEC. 36-117-29

SEC. 31-117-28

Statement of evidence relative to this corner location is on back of page.

I hereby certify that this document and the data contained herein was prepared by me or under my direct supervision.

Robert J. Jones 7-22-92  
SIGNATURE DATE

Registration No. 11864

- ☒ Land Surveyor, ☐ Professional Engineer  
☐ County Surveyor, ☐ County Engineer

OFFICE OF THE COUNTY RECORDER

County of McLeod

I hereby certify that this document was filed in the Co. Recorders office at 9 A. .M. on the 29<sup>th</sup> day of July A.D., 1992

County Recorder Armen Ostlie

By \_\_\_\_\_, Deputy

DOCUMENT NO. 246786

- 1855 - The original Public Land Survey of the Range Line was completed by John Ryan. The east quarter corner of the section was not set at that time because it fell in a lake. Meander corners were set on the south shore and the north shore of the lake at 37.50 chains and 47.52 chains respectively north of the Standard Parallel. Wood posts were set to mark these meander corners and each was referenced to two bearing trees.
- 1901 - E. L. Higgins, McLeod County Surveyor, found an old stake in the lake which was said to be the old quarter corner.
- Sometime between 1901 and 1970 the lake was drained.
- 1970 - Dickman Knutson, McLeod County Surveyor, dug for the corner and found a stone with a wood stake beside it 3 ft. below the road surface. John Tupa from Hutchinson dug with a backhoe. The found monument was located at the centerline of a north/south road and in line with a fence to the east. A cast iron monument was set over the found stone.
- 1981 - Willard Pellinen, McLeod County Surveyor, found the cast iron monument and set new reference ties.
- 1983 - Willard Pellinen found that the monument had been destroyed during road construction. The corner was reset according to the reference ties and the distances were measured to the section corners north and south. It was found that the corner was within 3 ft. of being half way between the section corners and within 2 ft. of being on the line between section corners.
- 1985 - Willard Pellinen reset a spike at the corner and later in the year replaced the spike with a cast iron monument.
- 1989 - Willard Pellinen recovered the monument and the reference ties in good condition. It was at the centerline of a north/south road and in line with a fence to the east.
- 1991 - R. C. Jones, Registered Land Surveyor with Mn/DOT, found the cast iron monument about 3" below the road surface. It was located at the centerline of a north/south road. The fence line to the east no longer exists.

The cast iron monument is accepted as the quarter corner location because it fits long standing occupation lines and is 2.07 ft. west and 3.21 ft. north of the lost location.

For additional information, contact the Mn/DOT Surveys Section at Willmar, Mn 56201.



# CERTIFICATE OF LOCATION OF GOVERNMENT CORNER

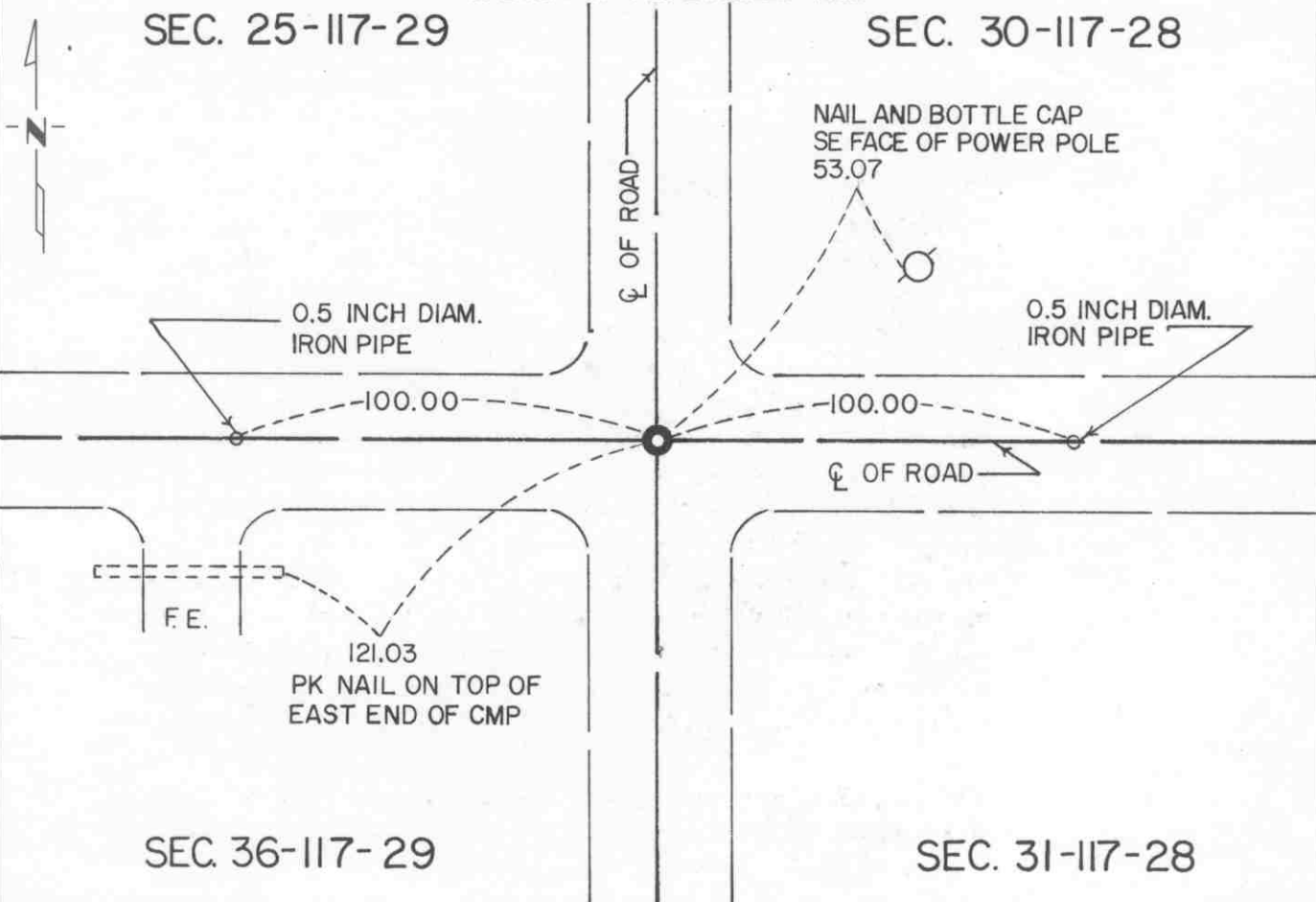
NORTHEAST Corner of Section 36, Township 117N, Range 29W, 5<sup>th</sup> P.M.

STATE OF MINNESOTA, County of MCLEOD

At the corner location shown on the sketch:

- ☒ On FEB. 1991 found a CAST IRON MONUMENT A FEW INCHES BELOW  
DATE THE ROAD SURFACE
- ☒ left monument as found, ☐ lowered monument, ☐ removed monument (explain)
- ☒ On FEB. 1991 placed a P.K. NAIL AT THE ROAD SURFACE DIRECTLY  
DATE ABOVE THE CAST IRON MONUMENT

SKETCH OF REFERENCE TIES



Statement of evidence relative to this corner location is on back of page.

I hereby certify that this document and the data contained herein was prepared by me or under my direct supervision.

Robert J. Gans  
SIGNATURE

7-22-92  
DATE

Registration No. 11864

☒ Land Surveyor, ☐ Professional Engineer

☐ County Surveyor, ☐ County Engineer

OFFICE OF THE COUNTY RECORDER

County of McLeod

I hereby certify that this document was filed in the Co. Recorders office at 9 A. .M. on the 29<sup>th</sup> day of July A.D., 1992

County Recorder Harmon D. Stie

By \_\_\_\_\_, Deputy

DOCUMENT NO. 246785



- 1855 - The original Public Land Survey of the Range Line was completed by John Ryan. A wood post was set to mark the corner with reference to four bearing trees.
- 1901 - E. L. Higgins, McLeod County Surveyor, found a stone at the corner and measured 2624.5 ft. to the north quarter corner and 2630 ft. to the east quarter corner of the section.
- 1929 - E. L. Higgins recovered the stone.
- 1935 - McLeod County Highway Department notes show a stone at the corner.
- 1970 - Dickman Knutson, McLeod County Surveyor, hired John Tupa from Hutchinson to dig for the corner with a backhoe. A stone and a wood stake were found 4.5 ft. below the road surface. A cast iron monument was set above the found monuments.
- 1981 - Willard Pellinen, McLeod County Surveyor, found the cast iron monument about 12" below the road surface. New reference ties were set because the old ones had been destroyed.
- 1983 - Willard Pellinen found the cast iron monument and the ties. The distances to the east quarter corner and the north quarter corner were measured. They were 2632.18 ft. and 2624.81 ft. respectively, which compare favorably with Higgins' 1901 distances.
- 1989 - Willard Pellinen recovered the cast iron monument and the reference ties in good condition. It was located at the centerline intersection of an east/west road with a north/south road.
- 1991 - A Mn/DOT survey crew (Gene East, crew chief) found the cast iron monument somewhat below the surface. A P.K. nail was set over the monument at the surface. It was located at the centerline intersection of an east/west road with a north/south road.

The cast iron monument is accepted as the corner location because it perpetuates the position of a monument found 90 years ago, which in turn may have perpetuated the location of the original wood post, it fits long standing occupation lines, and it closely fits the old survey distances.

For additional information, contact the Mn/DOT Surveys Section at Willmar, Mn 56201.

NORTH QUARTER Corner of Section 36, Township 117 N, Range 29 W, 5<sup>th</sup> P.M.  
STATE OF MINNESOTA, County of MCLEOD

At the corner location shown on the sketch:

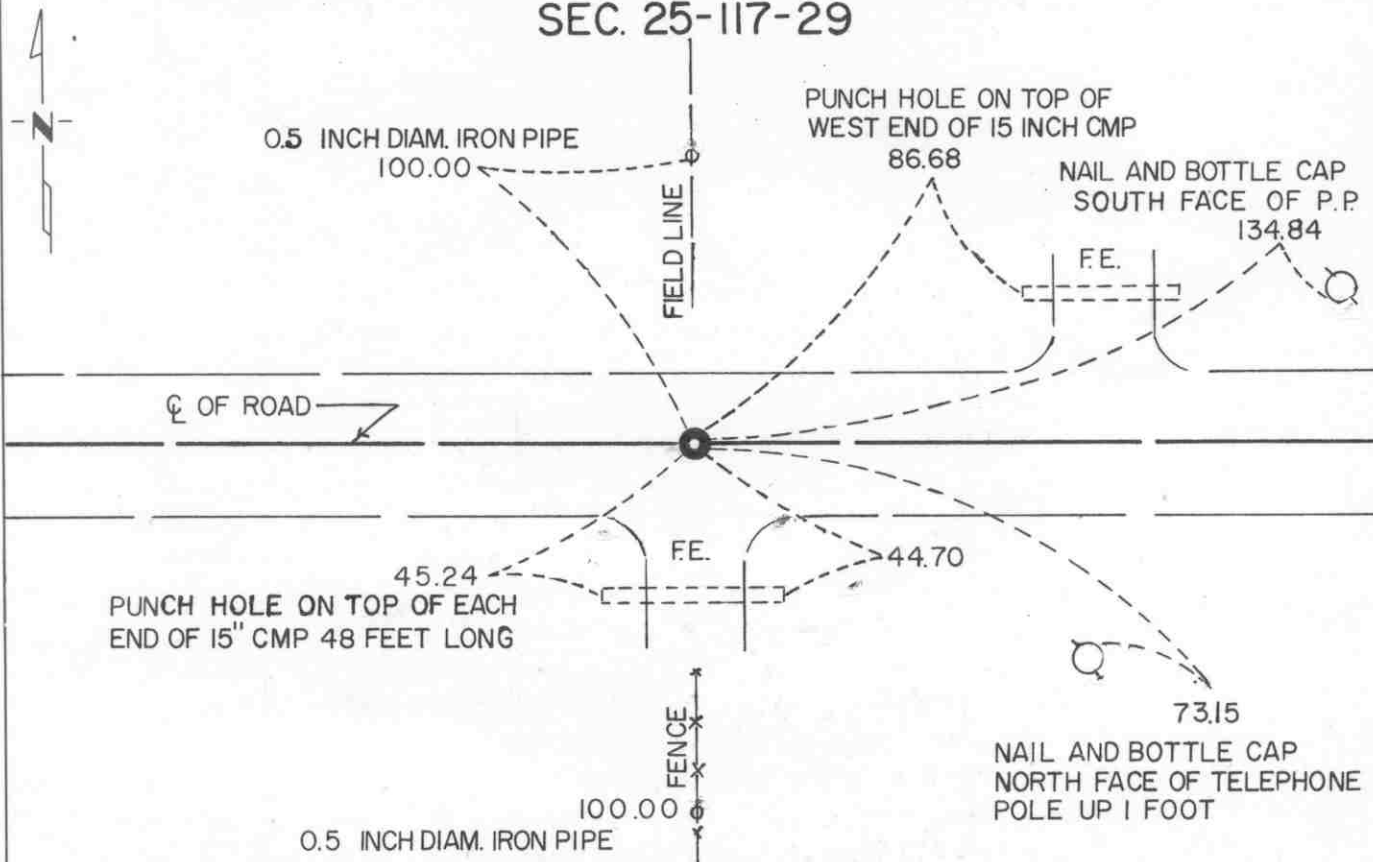
☒ On FEB. 1991 found a CAST IRON MONUMENT ABOUT 4" BELOW  
DATE THE ROAD SURFACE

☒ left monument as found, ☐ lowered monument, ☐ removed monument (explain)

☐ On \_\_\_\_\_ placed a \_\_\_\_\_  
DATE

### SKETCH OF REFERENCE TIES

SEC. 25-117-29



SEC. 36-117-29

Statement of evidence relative to this corner location is on back of page.

I hereby certify that this document and the data contained herein was prepared by me or under my direct supervision.

Koluit Jones 7-22-92  
SIGNATURE DATE

Registration No. 11864

☒ Land Surveyor, ☐ Professional Engineer

☐ County Surveyor, ☐ County Engineer

OFFICE OF THE COUNTY RECORDER

County of Inland

I hereby certify that this document was filed in  
the Co. Records office at 9 A. M. on the  
29th day of July A.D., 1992

County Recorder Armen Steh

By \_\_\_\_\_, Deputy

DOCUMENT NO. 246788

- 1856 - The original Public Land Survey was completed by A. H. Runyon. A wood post was set to mark the corner with reference to two bearing trees.
- 1901 - E. L. Higgins, McLeod County Surveyor, found a stone at the corner. He measured 2627.5 ft. to the northwest corner and 2624.5 ft. to the northeast corner of the section.
- 1966 - Roy Hansen, surveyor, found a 2" square iron monument at the corner.
- 1967 - Lew Merrill, former McLeod County Surveyor, stated that there should be a square iron monument at the corner.
- 1969 - Dickman Knutson, McLeod County Surveyor, found a 2" square iron monument and set a McLeod County cast iron monument. It is unclear whether the cast iron was set to replace the square monument or set above the square monument.
- 1979 - Dickman Knutson set a 1/2" diameter iron pipe at the corner according to the reference ties because the monuments found and set in 1969 had been destroyed during road construction.
- 1983 - Willard Pellinen, McLeod County Surveyor, found the iron pipe and replaced it with a cast iron monument and set reference ties. The distances to the northwest corner and the northeast corner of the section were 2627.50 ft. and 2624.81 ft. respectively, which compare very favorably with the 1901 survey distances.
- 1989 - Willard Pellinen recovered the cast iron monument and the reference ties all in good condition. It was located at the centerline of an east/west road, in line with a fence to the south, and in line with a field division to the north.
- 1991 - A Mn/DOT survey crew (Gene East, crew chief) found the cast iron monument about 4" below the road surface at the same location as shown by Pellinen in 1989.

The cast iron monument is accepted as the corner location because it perpetuates the position of a monument found 90 years ago, it fits long standing occupation lines, and it is 1.42 ft. east and 11.04 ft. north of the lost location.

For additional information, contact the Mn/DOT Surveys Section at Willmar, Mn 56201.

# CERTIFICATE OF LOCATION OF GOVERNMENT CORNER

SOUTH QUARTER Corner of Section 36, Township 117N, Range 29W, 5<sup>th</sup> P.M.  
STATE OF MINNESOTA, County of MCLEOD

At the corner location shown on the sketch:

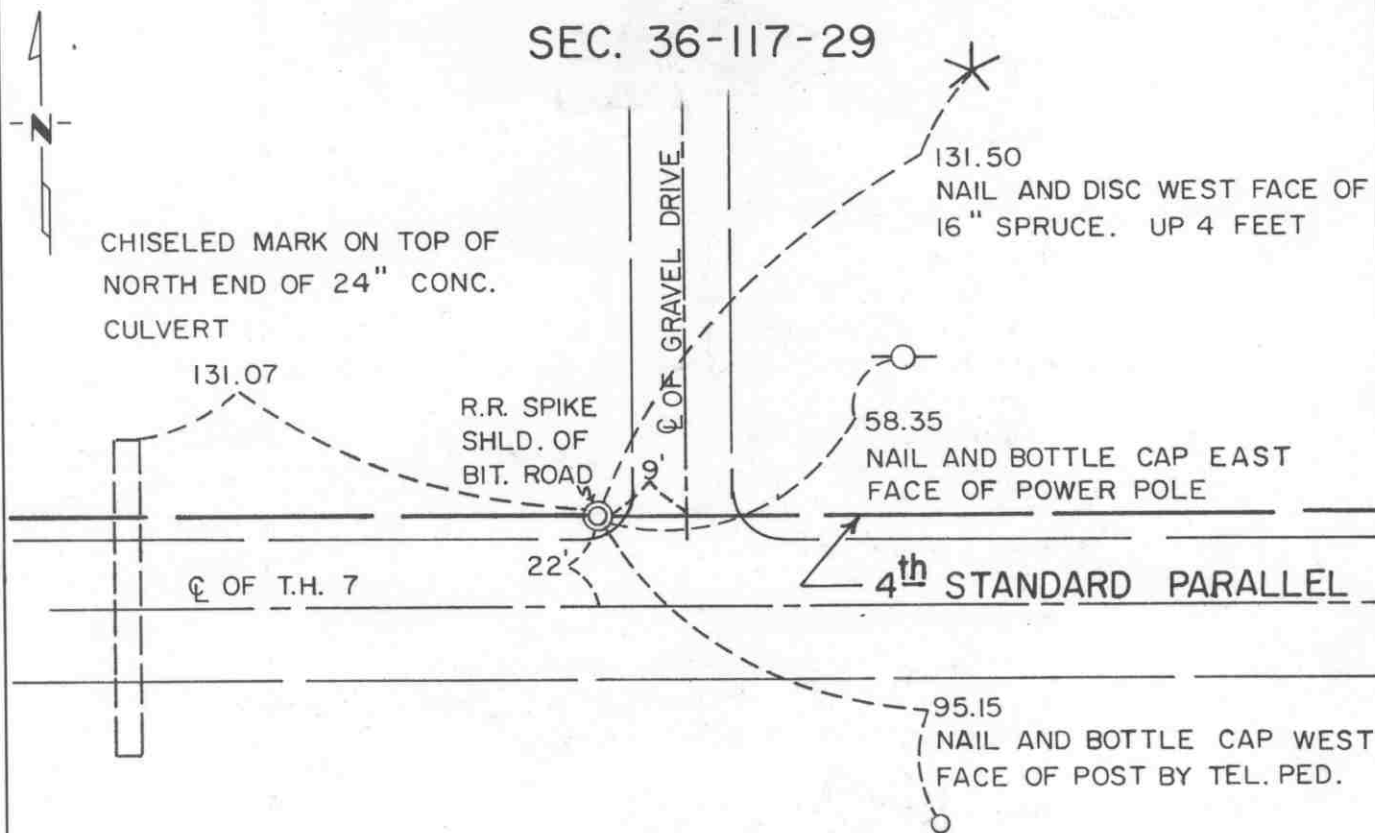
☒ On FEB. 1991 found a RAILROAD SPIKE AT THE ROAD SURFACE  
DATE

☒ left monument as found, ☐ lowered monument, ☐ removed monument (explain)

☐ On \_\_\_\_\_ placed a \_\_\_\_\_  
DATE

## SKETCH OF REFERENCE TIES

SEC. 36-117-29



SEC. 1-116-29

Statement of evidence relative to this corner location is on back of page.

I hereby certify that this document and the data contained herein was prepared by me or under my direct supervision.

Robert G. Gans 7-22-92  
SIGNATURE DATE

Registration No. 11864

☒ Land Surveyor, ☐ Professional Engineer

☐ County Surveyor, ☐ County Engineer

OFFICE OF THE COUNTY RECORDER

County of McLeod

I hereby certify that this document was filed in the Co. Recorders office at 9 A. M. on the 29<sup>th</sup> day of July, A.D., 1992

County Recorder Armin Estlie

By \_\_\_\_\_, Deputy

DOCUMENT NO. 246789

Statement of Evidence:

South Quarter Corner Section 36, T 117 N, R 29 W

- 1855 - The original Public Land Survey of the Fourth Standard Parallel was completed by John Ryan. A wood post was set to mark the corner with reference to two bearing trees.
- 1937 - The Minnesota Highway Department right of way map depicts the corner to be about 18 ft. north of T.H. 7 P.O.T. 271+18 as scaled on the map. It was located at or near the centerline of an old east/west road.
- 1938 - All evidence of the corner was probably destroyed when T.H. 7 was constructed.
- 1971 - Dickman Knutson, McLeod County Surveyor, set a 1/2" diameter iron pipe half way between the section corners. It was set 22 ft. north of the centerline of T.H. 7 as shown in the old highway cross section notes.
- 1979 - Dickman Knutson set a railroad spike using the 1971 reference ties.
- 1989 - Willard Pellinen, McLeod County Surveyor, found the railroad spike and two of the reference ties. Additional reference ties were set.
- 1991 - A Mn/DOT survey crew (Gene East, crew chief) found the railroad spike at the road surface. It is located 22.17 ft. north of T.H. 7 P.O.T. 271+20.78.

The railroad spike is accepted as the corner location because it fits old occupation lines as indicated in the highway cross section notes, it nearly fits the location indicated on the right of way map, and it is 0.15 ft. east and 16.04 ft. north of the lost location.

For additional information, contact the Mn/DOT Surveys Section at Willmar, Mn 56201.

# CERTIFICATE OF LOCATION OF GOVERNMENT CORNER

SOUTHEAST Corner of Section 36, Township 117 N, Range 29 W, 5<sup>th</sup> P.M.

STATE OF MINNESOTA, County of MCLEOD

At the corner location shown on the sketch:

☒ On FEB. 1991 found a RAILROAD SPIKE AT THE ROAD SURFACE  
DATE

☒ left monument as found, ☐ lowered monument, ☐ removed monument (explain)

☐ On \_\_\_\_\_ placed a \_\_\_\_\_  
DATE

SKETCH OF REFERENCE TIES

SEC. 36-117-29

SEC. 31-117-28

NAIL AND DISC  
EAST FACE  
OF POWER POLE  
83.85

CHISELD + ON TOP OF  
EACH OF 24' CONC.  
CULV. 86 FEET LONG

4<sup>th</sup> STANDARD PARALLEL

Q OF BIT. ROAD

Q OF GRAVEL ROAD

59.87

77.19

F.E.

71.46

78.23

PUNCH HOLE ON TOP OF  
EACH END OF 18 INCH  
32 FT. LONG CMP

SEC. 1-116-29

Statement of evidence relative to this corner location is on back of page.

I hereby certify that this document and the data contained herein was prepared by me or under my direct supervision.

Robert Jones 7-22-92  
SIGNATURE DATE

Registration No. 11864

☒ Land Surveyor, ☐ Professional Engineer

☐ County Surveyor, ☐ County Engineer

OFFICE OF THE COUNTY RECORDER

County of McLeod

I hereby certify that this document was filed in the Co. Recorders office at 9 A. M. on the 29<sup>th</sup> day of July A.D., 19 92

County Recorder Norman Ollie

By \_\_\_\_\_, Deputy

DOCUMENT NO. 246787

- 1855 - The original Public Land Survey of the Fourth Standard Parallel was completed by John Ryan. A wood post was set to mark the corner with reference to two bearing trees.
- 1935 - McLeod County Highway Department notes show the corner to be at the intersection of centerlines of T.H. 7 east/west and County Highway No. 71 north.
- 1937 - The Minnesota Highway Department right of way map depicts the corner to be somewhat north of T.H. 7 P.O.T. 297+65 as scaled on the map. It was located at or near the centerline of an old east/west road and at or near the centerline of a road to the north.
- 1938 - All evidence of the corner was probably destroyed when T.H. 7 was constructed.
- 1968 - Dickman Knutson, McLeod County Surveyor, set an iron pipe at the centerline intersection of T.H. 7 east/west and the county road to the north. Minnesota Highway Department cross section notes show that the centerline of the new T.H. 7 alignment is on the centerline of the old road.
- 1979 - Dickman Knutson set a railroad spike over the iron pipe.
- 1989 - Willard Pellinen, McLeod County Surveyor, found the railroad spike and set new reference ties.
- 1991 - A Mn/DOT survey crew (Gene East, crew chief) found the railroad spike at the road surface. It is located 0.19 ft. north of T.H. 7 P.O.T. 297+74.26 and nearly in line with the centerline of a county road to the north.

The railroad spike is accepted as the corner location because it reasonably fits the location shown on the right of way map and it fits long standing occupation lines.

For additional information, contact the Mn/DOT Surveys Section at Willmar, Mn 56201.